



Technical Specs

Visible Camera				
Image Sensor	1/1.8" progressive scan CMOS			
Resolution	2688x1520, 4MP			
Lens	6-300mm, 50x motorized zoom, F1.5-4.5 Field of view: 66.0° × 40.3° (H×V) – 1.4° × 0.8°(H×V)			
Min. illumination	Color: 0.005Lux, B/W: 0.001Lux, AGC ON, F1.5			
Electronic Shutter Speed	1/1~1/30000s			
Noise Reduction	2D/3D/AI-DNR			
Image Stabilization	EIS			
Day/Night	Auto(ICR)/Manual			
White Balance	Auto/Manual/ATW/Indoor/Outdoor/Sodium Lamp/Streetlight/Natural			
WDR	Support			
Optical Defog	Auto/Manual			
Anti-heatwave	Auto/Manual			
Digital Zoom	16x			
DORI Ratings*	Detection	Observation	Recognition	Identification
	4400m	1746m	880m	440m

*The DORI standard (based on the IEC EN62676-4:2015 international standard) defines different levels of detail for detection (25PPM), observation (62PPM), recognition (125PPM), and Identification (250PPM). This table is for reference only and performance may vary depending on the environment.

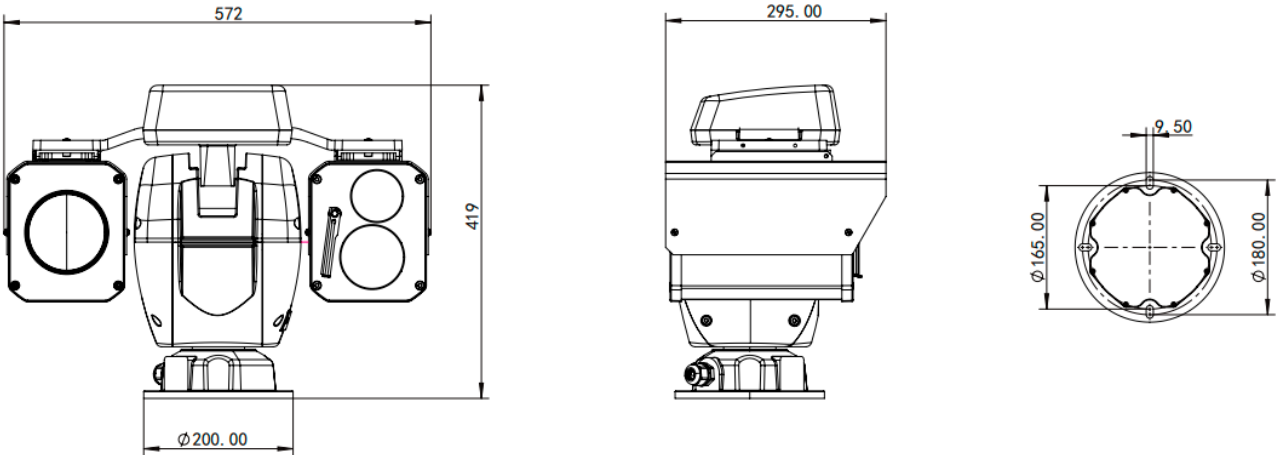
Thermal Camera			
Imager	Un-cooled FPA Vanadium Oxide microbolometer Pixel pitch: 12μm Spectral range: 8~14μm Sensitivity (NETD): <40mK		
Resolution	640 x 512, VGA		
Lens	25-75mm, 3x motorized zoom, F0.95-F1.2 Field of view: 17.46° × 14.01° (H x V)-5.86°x 4.69°(H x V)		
Color Modes	White hot, Black hot, Fusion, Rainbow, etc. 20 user-selectable		
Image Stabilization	EIS(Electronic)		
Digital Zoom	8x		
DRI Ratings*	Detection	Recognition	Identification
Human (1.8 x 0.5m)	2215m	553m	277m
Vehicle (2.3 x 2.3m)	5364m	1338m	672m
*The DRI distances are calculated according to Johnson criteria: detection(1.5 or more pixels), recognition(6 or more pixels), identification(12 or more pixels). This table is for reference only and performance may vary depending on the environment.			
IR Illuminator (optional)			
Laser Distance	800m/1500m/2000m		
Laser Wavelength	850nm±5nm		
Laser Angle	2° ~70°		
Laser Modes	On/Off/Auto		
Pan/Tilt			
Pan	Range: 360° continuous rotation Speed: 0.1°~ 100°/s		
Tilt	Range: -40°~+90° Speed: 0.1°~60°/s		
Preset	256		
Tour	8, Up to 32 presets per tour		
Scan	8		
Pattern	8		
Park	Preset/Tour/Scan/Pattern		
Scheduled Task	Preset/Tour/Scan/Pattern		
Power-off Memory	Support		
Video and Audio			
Video Compression	H.265/H.264/H.264H/ H.264B/MJPEG		
Main Stream	25/30fps (2688 x 1520, 1920 x 1080, 1280 x 720), 16fps@MJPEG		
Sub Stream	25/30fps (1920 x 1080, 1280 x 720, 704 x 576, 352 x 288)		
Image Encoding	JPEG, 1~7fps (2688 x 1520)		
OSD	Name, Time, Preset, Temperature, P/T Status, Zoom, Address, GPS, Image overlay, Abnormal		
Audio Compression	AAC (8/16kHz), MP2L2(16kHz)		
Network			

Network Protocols	IPv4, IPv6, HTTP, HTTPS, TCP, UDP, RTSP, RTCP, RTP, ARP, NTP, FTP, DHCP, PPPoE, DNS, DDNS, UPnP, IGMP, ICMP, SNMP, SMTP, QoS, 802.1x, Bonjour
API	ONVIF(Profile S, Profile G, Profile T), HTTP API, SDK
User	Up to 20 users, 2 level: Administrator, User
Security	User authentication (ID and password), IP/MAC address filtering, HTTPS encryption, IEEE 802.1x network access control
Web Browser	IE, EDGE, Firefox, Chrome
Web Languages	English/Chinese
Storage	MicroSD/SDHC/SDXC card (Up to 1Tb) edge storage, FTP, NAS
Analytics	
Perimeter Protection	Line crossing, Fence crossing, Intrusion
Temperature Measurement	Support real-time point temperature measurement function; Support temperature alert; Support real-time analysis of temperature and historical temperature query;
Temperature Range	Low temperature mode: -20℃ ~ 150℃ (-4°F ~ 302°F) High temperature mode: 0℃ ~ 550℃ (32°F ~ 1022 °F)
Temperature Accuracy	Max (±5℃, ±5%)
Cold and Hot Spot Tracking	Support automatic tracking of the hottest and coldest points
Target Distinction	Human/Vehicle/Vessel Classification
Behavioral Detection	Object left in area, Object removal, Fast moving, Gathering, Loitering, Parking
Events Detection	Motion, Masking, Scene change, Audio detection, SD card error, Network disconnection, IP conflict, Illegal network access
Fire Detection	Support
Smoke Detection	Support
Auto Tracking	Multiple detection tracking modes
Interface	
Alarm Input	7-ch
Alarm Output	2-ch
Audio Input	1-ch
Audio Output	1-ch
Ethernet	1-ch RJ45 10M/100M
RS-485	1-ch
General	
Casing	IP 66
Power	24V DC TVS 6000V, Surge protection, Voltage transient protection
Operating Conditions	Temperature: -40℃~+60℃, Humidity: <90%
Wiper	Built-in
Heater	Optional
Dimensions	572× 419× 295mm(W×H ×L)
Weight	20kg

Ordering Information

Model No.	Description
VS-PTZ4050NM-RV60753-L15-P30	4MP 50x Mid-range Multispectra VGA Thermal Positioning Camera (Fixed Focus Optional)

Dimensions



20th Floor, Block 9, Chunfeng Innovation Park
Binjiang, Hangzhou, China
Tel: +86-571-88063872
sales@viewsheen.com
www.viewsheen.com

