

2MP 90×ZOOM NETWORK & LVDS CAMERA MODULE | VS-SCZ2090NM-8



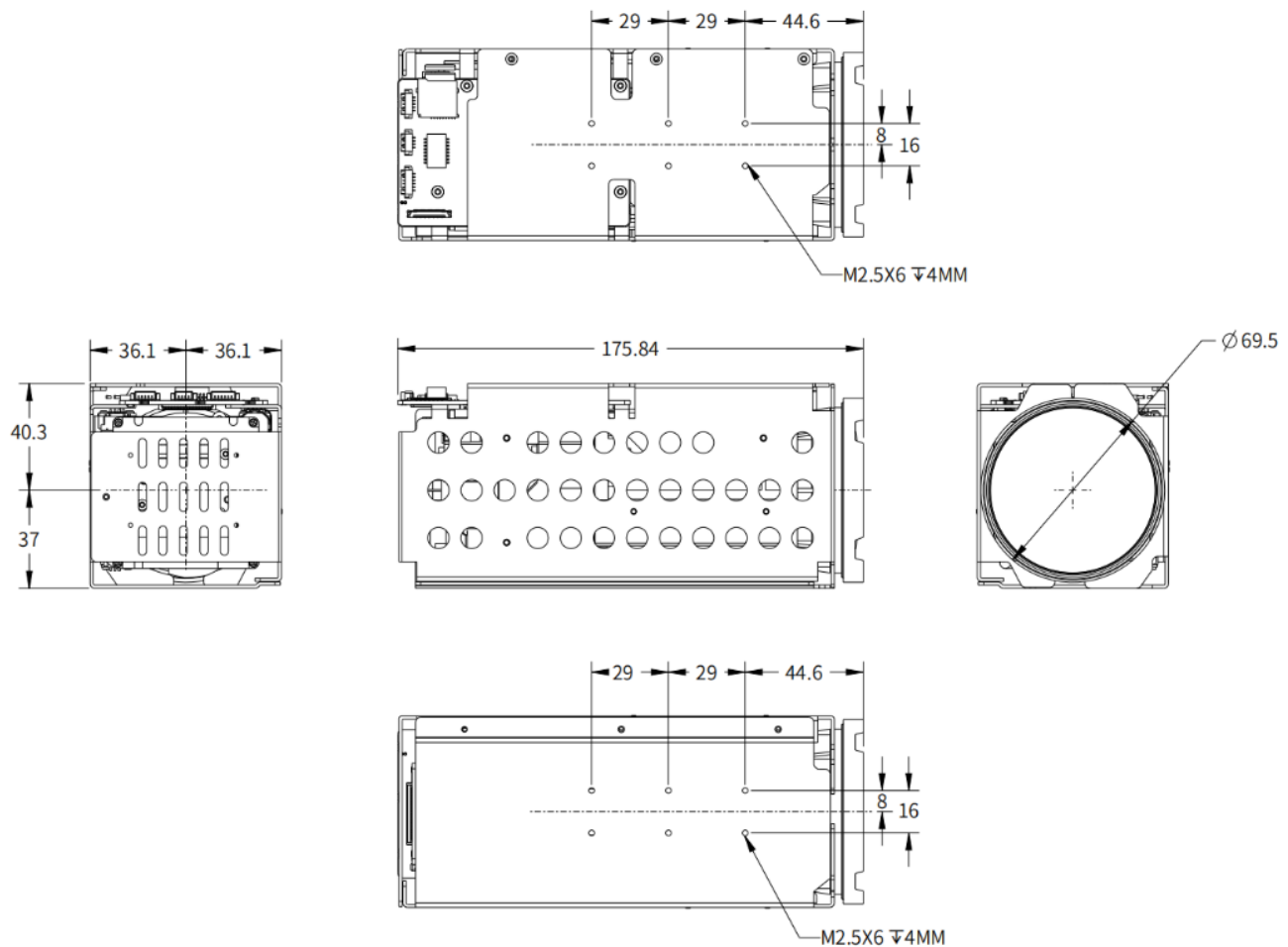
- 1/1.8" high sensitivity image sensor, Min. Illumination: 0.01Lux (Colour).
- 90× zoom, Fast and accurate autofocus.
- Max. Resolution: 1920*1080@30/25fps.
- Supports Electronic-Defog, HLC, BLC, WDR, Suitable for a wide range of applications.
- Supports ICR switching for true day/night surveillance.
- Supports independent configuration of two sets of Day/Night Profiles.
- Supports triple streams, meet the varying demands of stream bandwidth and frame rate for live preview and storage.
- Supports H.265, Higher encoding compression rate.
- Supports IVS: Tripwire, Intrusion, Loitering, etc.
- Supports ONVIF, Compatible with VMS and network devices from leading manufacturers.
- Full functions: PTZ control, Alarm, Audio, OSD, etc.
- Compact design with a wide range of interfaces.

Specification

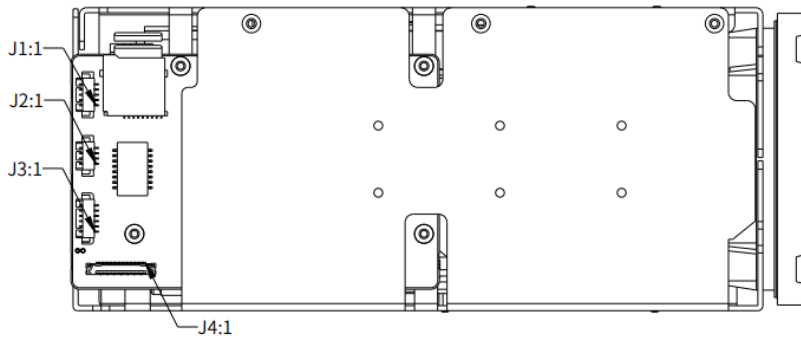
| Camera | | |
|--------------------------|----------------------|---|
| Sensor | Type | 1/1.8" Sony Progressive Scan CMOS |
| | Effective Pixels | 8.42 Megapixel |
| Lens | Focal Length | 6 ~ 540mm |
| | Zoom | 90 × |
| | Aperture | FNo: 1.4 ~ 4.8 |
| | HFOV | 60.6° ~ 1.0° |
| | VFOV | 36.5° ~ 0.6° |
| | DFOV | 67.7° ~ 1.1° |
| | Close Focus Distance | 1m ~ 5m (Wide ~ Tele) |
| | Zoom Speed | 9 Sec (Optics, Wide ~ Tele) |
| Video & Audio Network | Compression | H.265/H.264/H.264H/MJPEG |
| | Resolution | Main Stream: 1920*1080@25/30fps; 1280*720@25/30fps Sub-stream 1: D1@25/30fps; CIF@25/30fps Sub-stream 2: 1920*1080@25/30fps; 1280*720@25/30fps; D1@25/30fps LVDS: 1920*1080@25/30fps |
| | Video Bit Rate | 32kbps ~ 16Mbps |
| | Audio Compression | AAC/MP2L2 |
| | Storage Capabilities | TF card, up to 256GB |
| | Network Protocols | ONVIF, HTTP, RTSP, RTP, TCP, UDP |
| | General Events | Motion Detection, Tamper Detection, Scene Changing, Audio Detection, SD Card, Network, Illegal Access |
| | IVS | Tripwire, Intrusion, Loitering, etc. |
| Upgrade | | Support |
| Min Illumination | | Colour: 0.01Lux/F1.4 |
| Shutter Speed | | 1/1 ~ 1/30000 Sec |
| Noise Reduction | | 2D / 3D |
| Image Settings | | Saturation, Brightness, Contrast, Sharpness, Gamma, etc. |
| Flip | | Support |
| Exposure Model | | Auto/Manual/Aperture Priority/Shutter Priority/Gain Priority |
| Exposure Comp | | Support |
| WDR | | Support |
| BLC | | Support |
| HLC | | Support |
| S/N Ratio | | ≥ 55dB (AGC Off, Weight ON) |
| AGC | | Support |
| White Balance (WB) | | Auto/Manual/Indoor/Outdoor/ATW/Sodium Lamp/Natural/Street Lamp/One Push |
| Day/Night | | Auto (ICR)/Manual (Colour, B/W) |

| | |
|----------------------|---|
| Digital Zoom | 16× |
| Focus Model | Auto/Manual/Semi-Auto |
| Defog | Optical-Defog |
| Image Stabilisation | Electronic Image Stabilisation (EIS) |
| External Control | 2× TTL3.3V, Compatible with VISCA and PELCO protocols |
| Video Output | Network & LVDS |
| Baud Rate | 9600 (Default) |
| Operating Conditions | -30°C ~ +60°C; 20% to 80% RH |
| Storage Conditions | -40°C ~ +70°C; 20% to 95% RH |
| Weight | 900g |
| Power Supply | +9 ~ +12V DC |
| Power Consumption | Static: 5W; Max: 6W |
| Dimensions (mm) | Length * Width * Height: 175.84*72.2*77.3 |

Dimensions (mm)



Interface



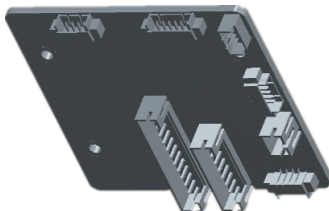
| J1 (A1251-05A 1.25MM) | |
|-----------------------|-----------|
| 1 | AUDIO_OUT |
| 2 | GND |
| 3 | AUDIO_IN |
| 4 | GND |
| 5 | NC |

| J2 (A1251-04A 1.25MM) | |
|-----------------------|--------|
| 1 | ETHRX- |
| 2 | ETHRX+ |
| 3 | ETHTX- |
| 4 | ETHTX+ |

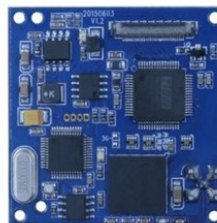
| J3 (A1251-06A 1.25MM) | |
|-----------------------|---------------------|
| 1 | +12V |
| 2 | GND |
| 3 | RXD1(TTL3.3V,Pelco) |
| 4 | TXD1(TTL3.3V,Pelco) |
| 5 | RXD0(TTL3.3V,Visca) |
| 6 | TXD0(TTL3.3V,Visca) |

| J4 (USL00-30L 0.4MM) | |
|----------------------|---------------------|
| 1 | NC |
| 2 | NC |
| 3 | NC |
| 4 | NC |
| 5 | NC |
| 6 | NC |
| 7 | NC |
| 8 | NC |
| 9 | GND |
| 10 | GND |
| 11 | GND |
| 12 | GND |
| 13 | +12V |
| 14 | +12V |
| 15 | +12V |
| 16 | +12V |
| 17 | +12V |
| 18 | RXD0(TTL3.3V,Visca) |
| 19 | TXD0(TTL3.3V,Visca) |
| 20 | GND |
| 21 | TXOUT0- |
| 22 | TXOUT0+ |
| 23 | TXOUT1- |
| 24 | TXOUT1+ |
| 25 | TXOUT2- |
| 26 | TXOUT2+ |
| 27 | TXOUTCLK- |
| 28 | TXOUTCLK+ |
| 29 | TXOUT3- |
| 30 | TXOUT3+ |

Accessories



485 Alarm Tail Board



LVDS to SDI adapter board



LVD wire