

VISHEEN PRODUCTS CATALOG

2024Q1



*Your solution specialist for
multi-spectral imaging.*

Company Introduction

01

VISHEEN Core Technology

02

Multi-Spectral Camera Products Line-up

05

AI NVR

11

Applications

13



Company Introduction

ABOUT US

Founded in 2016, View Sheen Technology is a national high tech enterprise with over 60% of R&D Engineers. The company continuously invests 60%~80% of its annual profit into innovation of new products and technologies.

View Sheen Technology specialises in designing and manufacturing advanced, long-range thermal technology-based solutions for intelligence surveillance&detection in critical infrastructure and boarder protection. Based on our long-standing expertise in digital image processing, lens control, video transmission, we have extended our portfolio from visible and NIR light to LWIR&SWIR where our solution provides our partner with a multi spectrum of modular, scalable systems to meet the needs of the market and users.

OUR MISSION

We provide our partners with comprehensive, highly customized, protective solutions to make sure the safety and continuous security of complicated, heavily populated areas or remote sites, infrastructures, public spaces and borders. Our strength lies in our flexibility enabling us to offer high quality solutions for the specific needs of the projects.

OUR VISION

We are dedicated to be the first choice offering the right cutting edge technology in the field of video surveillance technology and in the meantime doing our best to keep customer satisfaction at highest of a superior service quality in the field of multi-spectral imaging video surveillance technology.

VISHEEN Core Technology

NDAA Compliant

VISHEEN products do not use or install components or chips produced by NDAA prohibited manufacturers or brands, therefore making our products completely NDAA compliant.

Deep Learning AI Algorithm

- Embedded with deep learning AI Chipset to distinguish target type, such as human and vehicle.
- Variety kinds of algorithm capable for wide range of scenarios.



Smoke Detection



Fire Point Detection



Human Detection



Vehicle Detection



Perimeter Protection



Helmet Detection

Accurate Temperature Measurement



Custom Point/Line/Area Temperature Measurement suitable for inspection of critical infrastructure to detect abnormality of device temperature and eliminate hidden threat.

Detection Range: -20°C~550°C
Accuracy up to $\pm 3\%$

Back-End AI NVR



Perfect integration with front-end thermal camera, realtime temperature analysis and multiple AI functions are supported. Two-Way talk.

Two Image Channel, One IP Address



Thermal and visual image under same web interface, makes it easy to manage.
Dual channel IVS

OEM/ODM Customized Service



VISHEEN has more than 10 years professional CCTV industry experience and are able to provide hardware/software OEM/ODM customized service for our customers.






VISHEEN Multi-Spectral Camera Products Line-up

With advanced thermal technology, the VISHEEN Bi-Spectrum Series network camera supports multiple features, such as visual & thermal hybrid image, PIP, image fusion and AI algorithm. With high accurate thermal measurement, this camera series provides a multi-functional thermal image to meet variety customer needs.



Defender Pro Positioning Cameras

Model		Defender Pro P60C Laser	Defender Pro P60C	Defender Pro P60B
Appearance				
Thermal	Detector	Uncooled Vox FPA, 1280 ×1024		Uncooled Vox FPA, 640 × 512
	NETD	≤50mK@f/1.0		
	Pixel Pitch	12μm		
	Response Band	8μm ~ 14μm		
	Lens	50~350mm 7x; F1.4		30~150mm, 5x; F0.85~F1.2
	Image Stabilisation	Electronical Image Stabilisation (EIS)		
	Digital Zoom	8x		
Visible	Sensor	1/1.8" CMOS, 4 Megapixel		
	Lens	15~775mm, 52x		
	Defog	Electronic-Defog / Optical-Defog		
	Image Stabilisation	Electronical Image Stabilisation (EIS)		
Laser	Laser Finder	Up to10KM	/	
Analytics	Perimeter Protection	Line crossing, Fence crossing, Intrusion		
	Target Distinction	Human/Vehicle/Vessel Classification		
	Behavioral Detection	Object left in area, Object removal, Fast moving, Gathering, Loitering, Parking		
	Events Detection	Motion, Masking, Scene change, Audio detection, SD card error, Network disconnection, IP conflict, Illegal network access		
	Fire Detection	Support		
	Smoke Detection	Support		
	Strong Light Protection	Support		
	Auto Tracking	Multiple detection tracking modes		
Video & Network	Compression	H.265/H.264/H.264H/MJPEG		
	Max. Resolution	Visible: 2688*1520@25/30fps Thermal: 1280*1024@25/30fps		
	Storage	MicroSD/SDHC/SDXC card (Up to 1Tb) edge storage, FTP, NAS		
	Pan/ tilt Unit	Pan	Range: 360° continuous rotation Speed: 0.01°~ 180°/s	
Tilt		Range: -90°~ +90° Speed: 0.01° ~ 100°/s		
PT Function		Proportional Zoom, Tour, Auto Scan, 256 Preset points, Power off self locking, Power off memory.		
Fan/Heater		Integrated, Auto/Manual		
Wiper		Integrated, Manual/Scheduled		
Interface	Audio	1-ch in; 1-ch out		
	Alarm	7-ch in; 2-ch out		
General	Protection Level	IP66, TVS 6000V, Lightning Protection, Surge Protection and Voltage Transient		
	Operating Temperature	-40℃ ~ +70℃ (-40°F to 158°F)		
	Operating Humidity	≤95%RH (no condensation)		
	Power	DC48V		
	Weight	75KG	60KG	

Defender Positioning Cameras



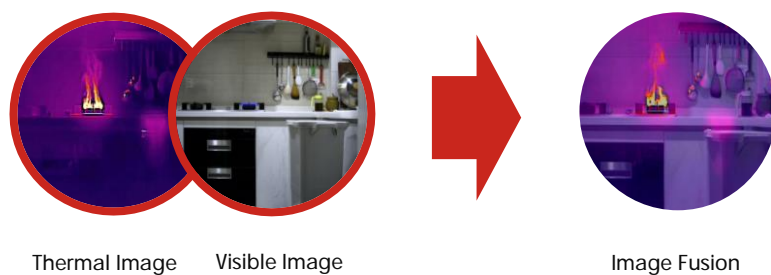
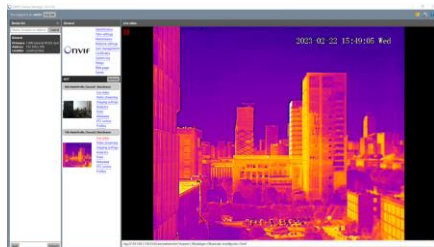
Model		Defender R30L	Defender R30
Appearance			
Thermal	Detector	Uncooled Vox FPA, 640 x 512	
	NETD	≤50mK@f/1.0	
	Pixel Pitch	12μm	
	Response Band	8μm ~ 14μm	
	Lens	30~150mm 7x; F0.85~F1.2	
	Image Stabilisation	Electronical Image Stabilisation (EIS)	
	Digital Zoom	8x	
Visible	Sensor	1/1.8" CMOS, 4 Megapixel	
	Lens	15~775mm, 52x	6~300mm, 50x
	Defog	Electronic-Defog / Optical-Defog	
	Image Stabilisation	Electronical Image Stabilisation (EIS)	
Laser	Laser Illuminator	≥ 3000m	/
Analytics	Perimeter Protection	Line crossing, Fence crossing, Intrusion	
	Target Distinction	Human/Vehicle/Vessel Classification	
	Behavioral Detection	Object left in area, Object removal, Fast moving, Gathering, Loitering, Parking	
	Events Detection	Motion, Masking, Scene change, Audio detection, SD card error, Network disconnection, IP conflict, Illegal network access	
	Fire Detection	Support	
	Smoke Detection	Support	
	Strong Light Protection	Support	
	Auto Tracking	Multiple detection tracking modes	
Video & Network	Compression	H.265/H.264/H.264H/MJPEG	
	Max. Resolution	Visible: 2688*1520@25/30fps Thermal: 1280*1024@25/30fps	
	Storage	MicroSD/SDHC/SDXC card (Up to 1Tb) edge storage, FTP, NAS	
Pan/ tilt Unit	Pan	Range: 360° continuous rotation Speed: 0.01° ~ 40°/s	Range: 360° continuous rotation Speed: 0.1° ~ 30°/s
	Tilt	Range: -45° ~ +45° Speed: 0.01° ~ 20°/s	Range: -45° ~ +45° Speed: 0.1° ~ 15°/s
	PT Function	Proportional Zoom, Tour, Auto Scan, 255 Preset points, Power off self locking, Power off memory.	
	Fan/Heater	Integrated, Auto/Manual	
	Wiper	Integrated, Manual/Scheduled	
Interface	Audio	1-ch in; 1-ch out	
	Alarm	7-ch in; 2-ch out	1-ch in; 1-ch out
General	Protection Level	IP66, TVS 6000V, Lightning Protection, Surge Protection and Voltage Transient	
	Operating Temperature	-40°C ~ +70°C (-40°F to 158°F)	
	Operating Humidity	≤95%RH (no condensation)	
	Power	DC48V	
	Weight	75KG	32KG

Image Fusion

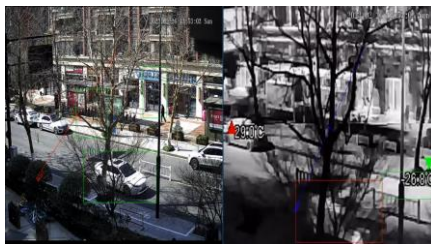


Both visible image and thermal image are accurately integrated to produce a new image containing details and temperature information, providing more information that can aid user's decision making.

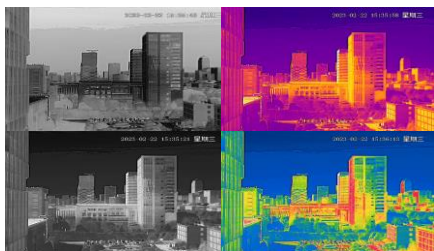
ONVIF Compatible



AI Algorithm based target identification



Multiple pseudo color selections



Support white heat, black heat, fusion, rainbow, etc. 11 kinds of pseudo-color adjustable

High accurate Temperature Measurement/ Over temperature alarm



Wide temperature measurement range: $-20^{\circ}\text{C} \sim 550^{\circ}\text{C}$
Accuracy up to: $\pm 3\%$




Smoking Detection



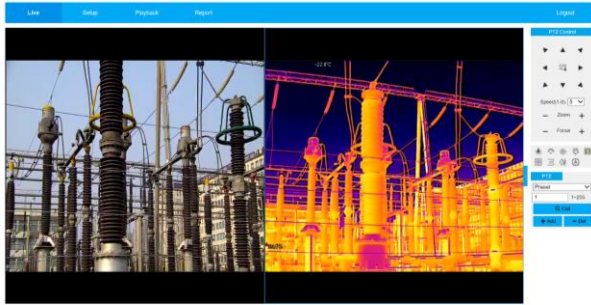
Thermal Intelligence



Inspector Positioning Cameras

Model		Inspector T10M	Inspector T10M	Inspector T10
Appearance				
Thermal	Detector	Uncooled Vox FPA, 640 × 512		
	NETD	≤50mK@f/1.0		
	Pixel Pitch	12μm		
	Response Band	8μm ~ 14μm		
	Lens	25mm	35mm	55mm
	Image Stabilisation	Electronical Image Stabilisation (EIS)		
	Digital Zoom	8x		
Visible	Sensor	1/1.8" CMOS, 4 Megapixel		
	Lens	6.5~240mm, 37x		
	Defog	Electronic-Defog / Optical-Defog		
	Image Stabilisation	Electronical Image Stabilisation (EIS)		
IR	IR Distance	60m		
Analytics	Perimeter Protection	Line crossing, Fence crossing, Intrusion		
	Temperature Measurement	Range: -20°C ~ 550°C; Accuracy: ±3°C, ±3%		/
	Target Distinction	Human/Vehicle/Vessel Classification		
	Behavioral Detection	Object left in area, Object removal, Fast moving, Gathering, Loitering, Parking		
	Events Detection	Motion, Masking, Scene change, Audio detection, SD card error, Network disconnection, IP conflict, Illegal network access		
	Fire Detection	Support		
	Smoke Detection	Support		
	Strong Light Protection	Support		
	Auto Tracking	Multiple detection tracking modes		
Video & Network	Compression	H.265/H.264/H.264H/MIPEG		
	Max. Resolution	Visible: 2688*1520@25/30fps Thermal: 1280*1024@25/30fps		
	Storage	MicroSD/SDHC/SDXC card (Up to 1Tb) edge storage, FTP, NAS		
Pan/ tilt Unit	Pan	Range: 360° continuous rotation Speed: 0.1° ~ 30°/s		
	Tilt	Range: -90° ~ +90° Speed: 0.1° ~ 15°/s		
	PT Function	Proportional Zoom, Tour, Auto Scan, 256 Preset points, Power off memory.		
	Wiper	Integrated, Manual/Scheduled		
Interface	Audio	1-ch in; 1-ch out		
	Alarm	7-ch in; 2-ch out		
General	Protection Level	IP66, TVS 6000V, Lightning Protection, Surge Protection and Voltage Transient		
	Operating Temperature	-40°C ~ +70°C (-40°F to 158°F)		
	Operating Humidity	≤95%RH (no condensation)		
	Power	DC48V		
	Weight	7.5KG		

Accurate temperature measurement



PIP



Optical Defog feature



Optical Defog off

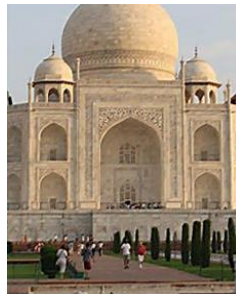


Optical Defog on

OIS(Optical Image Stabilization) feature



OIS off



OIS on

EIS(Electronic Image Stabilization) Function



EIS off

EIS on




Fire Point Detection



Global Shutter feature



Protector Cameras

Model		Protector B10	Protector SM10	Protector S10
Appearance				
Thermal	Detector	Uncooled Vox FPA, 256 × 192	Uncooled Vox FPA, 640 x 512	/
	NETD	≤50mK@f/1.0		/
	Pixel Pitch	12μm		/
	Response Band	8μm ~ 14μm		/
	Lens	7mm	25mm	/
	Image Stabilisation	Electronical Image Stabilisation (EIS)		/
	Digital Zoom	8x		/
Visible	Sensor	1/2.8" CMOS, 5 Megapixel	1/1.8" CMOS, 4 Megapixel	1/2.8" CMOS, 2 Megapixel
	Lens	8mm	6.5~240mm, 37x	4.7~150mm, 32x
	Defog	Electronic-Defog / Optical-Defog		
	Image Stabilisation	Electronical Image Stabilisation (EIS)		
IR	IR Distance	35m	50m	150m
Analytics	Perimeter Protection	Line crossing, Fence crossing, Intrusion		
	Temperature Measurement	Range: -20°C ~ 550°C; Accuracy: ±5°C, ±5%	Range: -20°C ~ 550°C; Accuracy: ±3°C, ±3%	NA
	Target Distinction	Human/Vehicle/Vessel Classification		
	Behavioral Detection	Object left in area, Object removal, Fast moving, Gathering, Loitering, Parking		
	Events Detection	Motion, Masking, Scene change, Audio detection, SD card error, Network disconnection, IP conflict, Illegal network access		
	Fire Detection	Support		
	Smoke Detection	Support		
	Strong Light Protection	Support		
	Auto Tracking	Multiple detection tracking modes		
Video & Network	Compression	H.265/H.264/H.264H/MJPEG		
	Max. Resolution	Visible: 2560*1920@25/30fps Thermal: 1280*1024@25/30fps	Visible: 2688*1520@25/30fps Thermal: 1280*1024@25/30fps	Visible: 1920*1080@50/60fps
	Storage	MicroSD/SDHC/SDXC card (Up to 1Tb) edge storage, FTP, NAS		
Pan/ tilt Unit	Pan	/	Range: 360° continuous rotation Speed: 0.1°~ 200°/s	Range: 360° continuous rotation Speed: 0.1°~ 200°/s
	Tilt	/	Range: -10°~+90° Speed: 0.1° ~ 105°/s	Range: -10°~+90° Speed: 0.1°~105°/s
	PT Function	/	Proportional Zoom, Tour, Auto Scan, Presets, Power off memory	Proportional Zoom, Tour, Auto Scan, Presets, Power off memory
Interface	Audio	1-ch in; 1-ch out		
	Alarm	2-ch in; 2-ch out	2-ch in; 1-ch out	1-ch in; 1-ch out
General	Protection Level	IP66, TVS 6000V, Lightning Protection, Surge Protection and Voltage Transient		
	Operating Temperature	-40°C ~ +70°C (-40°F to 158°F)		
	Operating Humidity	≤95%RH (no condensation)		
	Power	DC12V, PoE	AC24V	DC24V, PoE+
	Weight	1.5KG	8KG	3KG

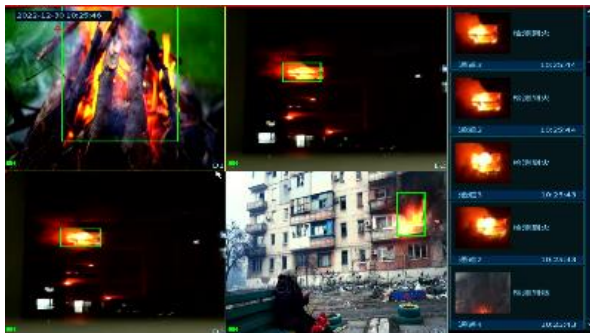


AI NVR

The VISHEEN AI NVR offers reasonable prices and easy configuration, allowing it to meet the needs of industrial applications. The NVR series has excellent decoding capability and strong AI features. It provides potential risk prevention and real-time alarm.

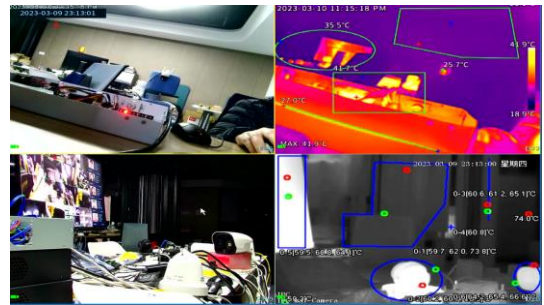
Build-in mic/speaker, Two-way talk

AI Function





Support face detection, safety helmet detection, fire point detection.

Historical Temperature Information Query



AI Network Video Recorder

Model	VS-SVR5216	VS-SVR5232
Appearance		
Processor	NDA compliant industrial grade embedded microcontrollers	NDA compliant industrial grade embedded microcontrollers
IP Camera Input	16 channels	32 channels
Bandwidth	256Mbps	256Mbps
Resolution	16MP/12MP/8MP/7MP/6MP/5MP/4MP/3MP/1080p/720p/D1/CIF	16MP/12MP/8MP/7MP/6MP/5MP/4MP/3MP/1080p/720p/D1/CIF
Decoding Capability	12-ch@1080P	12-ch@1080P
Video Output	1 × VGA, 1 × HDMI	1 × VGA, 1 × HDMI
Compression	H.265;Smart265;H.264;Smart264;MJPEG	H.265;Smart265;H.264;Smart264;MJPEG
Internal HDD	1U case, 2 SATA III ports, up to 10 TB for a single HDD	1U case, 2 SATA III ports, up to 10 TB for a single HDD
Playback	16-ch	16-ch
AI OPS	internal AI OPS: 2.25T. Additional NVIDIA NX series intelligent card is available for extra AI functions	internal AI OPS: 2.25T. Additional NVIDIA NX series intelligent card is available for extra AI functions
AI Functions	mask detection, safety helmet detection, Pedestrian and Vehicle detection, fire alarm detection.	mask detection, safety helmet detection, Pedestrian and Vehicle detection, fire alarm detection.
Thermal Alarm	Support	Support
Thermal Database	Support	Support
Audio Compression	PCM/G711A/G711U/G726/AAC	PCM/G711A/G711U/G726/AAC
Audio	1- Channel /1- Channel	1- Channel /1- Channel
Alarm	4 Input / 2 Output, A/B, Ctrl 12V	4 Input / 2 Output, A/B, Ctrl 12V
Loud Speaker	Support	Support
USB Port	1 USB2.0,1 USB3.0	1 USB2.0,1 USB3.0
Network Port	2 × RJ-45, 10/100/1000 Mbps	2 × RJ-45, 10/100/1000 Mbps
Power Supply	DC12V/4A	DC12V/4A

Applications

Critical Infrastructure Inspection



Thermal cameras are widely used in critical infrastructure sites to discover abnormality and avoid major failures. It is especially helpful for trouble shooting potential electrical overloads, worn or bad circuit breakers and buses.

Perimeter Protection



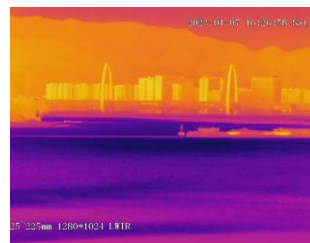
Thermal camera can detect human targets several kilometers away, makes it extremely suited for boarder surveillance or building perimeter protection.

Fire Prevention



It is very difficult for normal surveillance camera to locate the source of a fire outbreak in complicated scenarios such as forests, high density industrial park or heavily populated area. Thermal camera can easily find the locate the fire source. Even in rescue and search missions, Thermal camera is already an important tool.

Costal Surveillance & Maritime Affairs



Day and night, in good weather and bad, Thermal camera are able to provide critical features to meet variety needs and ensure mission success for different vessels, police or coastal guard boats.



Leading Provider of Long Range and Multispectral Cameras

Hangzhou View Sheen Technology Co., Ltd.

20th Floor, Block 9, Chunfeng Innovation Park
Binjiang, Hangzhou, China
Tel: +86-571-88063872
sales@viewsheen.com
www.viewsheen.com



VISHEEN