

## 2MP 30× ZOOM NETWORK & LVDS DUAL OUTPUT CAMERA MODULES | VS-SCZ2030KM



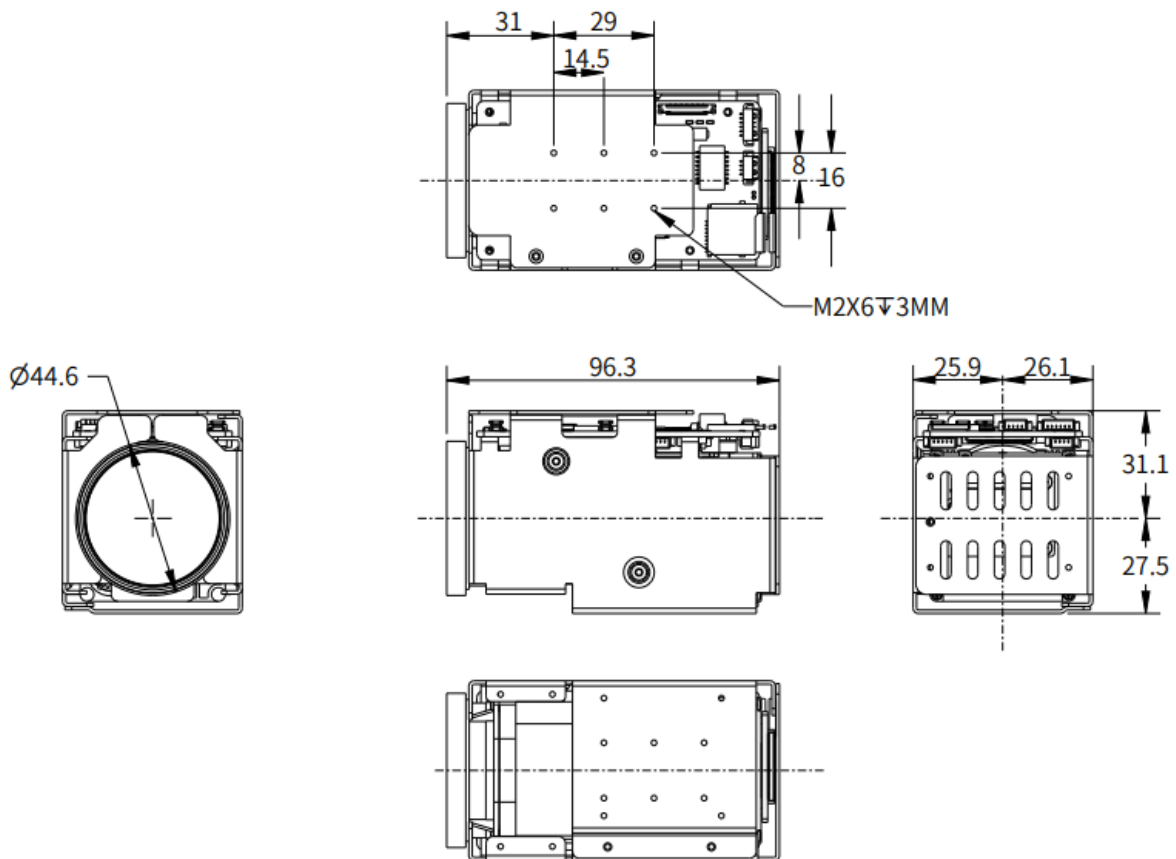
- 1/2.8" high sensitivity image sensor, Min. Illumination: 0.005Lux (Colour).
- 30× optical zoom, Fast and accurate autofocus.
- Max. Resolution: 1920\*1080@30fps.
- Network & LVDS Dual Output.
- Equipped with NOVATEK main control chip.
- Supports Electronic-Defog, HLC, BLC, WDR, Suitable for a wide range of applications.
- Supports ICR switching for true day/night surveillance.
- Supports independent configuration of two sets of Day/Night Profiles.
- Supports triple streams, meet the varying demands of stream bandwidth and frame rate for live preview and storage.
- Supports H.265, Higher encoding compression rate.
- Supports IVS: Tripwire, Intrusion, Loitering, etc.
- Supports ONVIF, Compatible with VMS and network devices from leading manufacturers.
- Full functions: PTZ control, Alarm, Audio, OSD.

## Specification

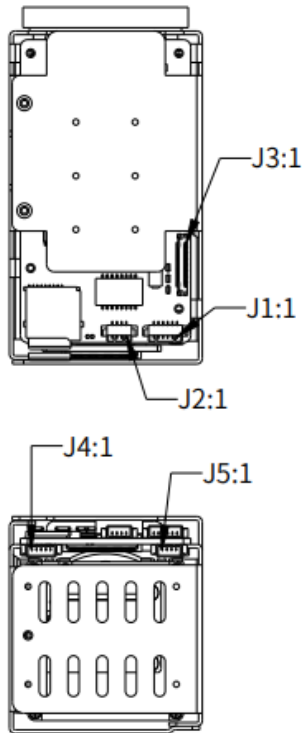
Camera		
Sensor	Type	1 / 2.8" Sony Progressive Scan CMOS
	Effective Pixels	2.13 M Pixels
Lens	Focal Length	4.7 ~ 141mm
	Optical Zoom	30×
	Aperture	FNo: 1.5 ~ 4.0
	HFOV (°)	61.2° ~ 2.2°
	LFOV (°)	36.8° ~ 1.2°
	DFOV (°)	68.4° ~ 2.5°
	Close Focus Distance	0.1m ~ 1.5m (Wide ~ Tele)
	Zoom Speed	3.5 Sec (Optics, Wide ~ Tele)
Video & Audio Network	Compression	H.265/H.264/H.264H/MJPEG
	Max. Resolution	Main Stream: 1920*1080 @ 30fps
	Video Bit Rate	32kbps ~ 16Mbps
	Audio Compression	AAC / MPEG2-Layer2
	Storage Capabilities	TF card, up to 256GB
	Network Protocols	ONVIF, HTTP, HTTPS, RTSP, RTP, TCP, UDP
	General Events	Motion Detection, Tamper Detection, Scene Changing, Audio Detection, Network, Illegal Access
	IVS	Tripwire, Intrusion, Loitering, etc.
Upgrade		Support
Min Illumination		Colour: 0.005Lux/F1.5; B/W: 0.0005Lux/F1.5
Shutter Speed		1 / 3 ~ 1 / 30000 Sec
Noise Reduction		2D / 3D
Image Settings		Saturation, Brightness, Contrast, Sharpness, Gamma, etc.
Flip		Support
Exposure Model		Auto/Manual/Aperture Priority/Shutter Priority/Gain Priority
Exposure Comp		Support
WDR		Support
BLC		Support
HLC		Support
S/N Ratio		≥ 55dB (AGC Off, Weight ON)
AGC		Support
White Balance (WB)		Auto/Manual/Indoor/Outdoor/ATW/Sodium Lamp/Natural/Street Lamp/One Push
Day/Night		Auto (ICR)/Manual (Colour, B/W)
Digital Zoom		16×
Focus Model		Auto/Manual/Semi-Auto
Defog		Electronic-Defog

Image Stabilisation	Electronic Image Stabilisation (EIS)
External Control	2× TTL3.3V, Compatible with VISCA and PELCO protocols
Video Output	Network & LVDS
Baud Rate	9600 (Default)
Operating Conditions	-30°C ~ +60°C; 20 % to 80 % RH
Storage Conditions	-40°C ~ +70°C; 20 % to 95 % RH
Weight	300g
Power Supply	+9 ~ +12V DC (Recommend: 12V)
Power Consumption	Avg: 2.5W; Max: 4.5W
Dimensions (mm)	Length * Width * Height: 96.3*52*58.6

## Dimensions (mm)



## Interface



J3 (USL00-30L 0.4MM)	
1	NC
2	NC
3	NC
4	NC
5	NC
6	NC
7	NC
8	NC
9	GND
10	GND
11	GND
12	GND
13	+12V
14	+12V
15	+12V
16	+12V
17	+12V
18	UART1_RX
19	UART1_TX
20	GND
21	TXOUT0-
22	TXOUT0+
23	TXOUT1-
24	TXOUT1+
25	TXOUT2-
26	TXOUT2+
27	TXOUTCLK-
28	TXOUTCLK+
29	TXOUT3-
30	TXOUT3+

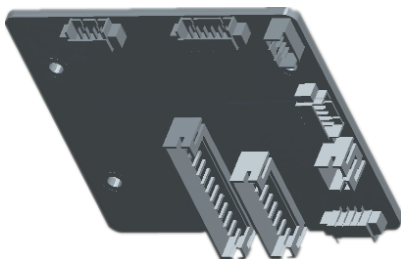
J1(A1251-06A 1.25MM)	
1	+12V
2	GND
3	RXD1(TTL3.3V,Pelco)
4	TXD1(TTL3.3V,Pelco)
5	RXD0(TTL3.3V,Visca)
6	TXD0(TTL3.3V,Visca)

J2(A1251-04A 1.25MM)	
1	ETHRX-
2	ETHRX+
3	ETHTX-
4	ETHTX+

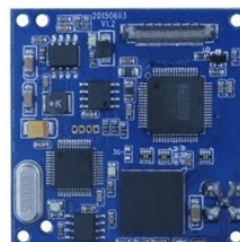
J4(A1251-05A 1.25MM)	
1	AUDIO_OUT
2	GND
3	AUDIO_IN
4	GND
5	NC

J5(A1251-04A 1.25MM)	
1	+VDD_USB
2	USB_DP
3	USB_DM
4	GND

## Accessories



485 Alarm Tail Board



LVDS to SDI Tail board



LVDS Cable