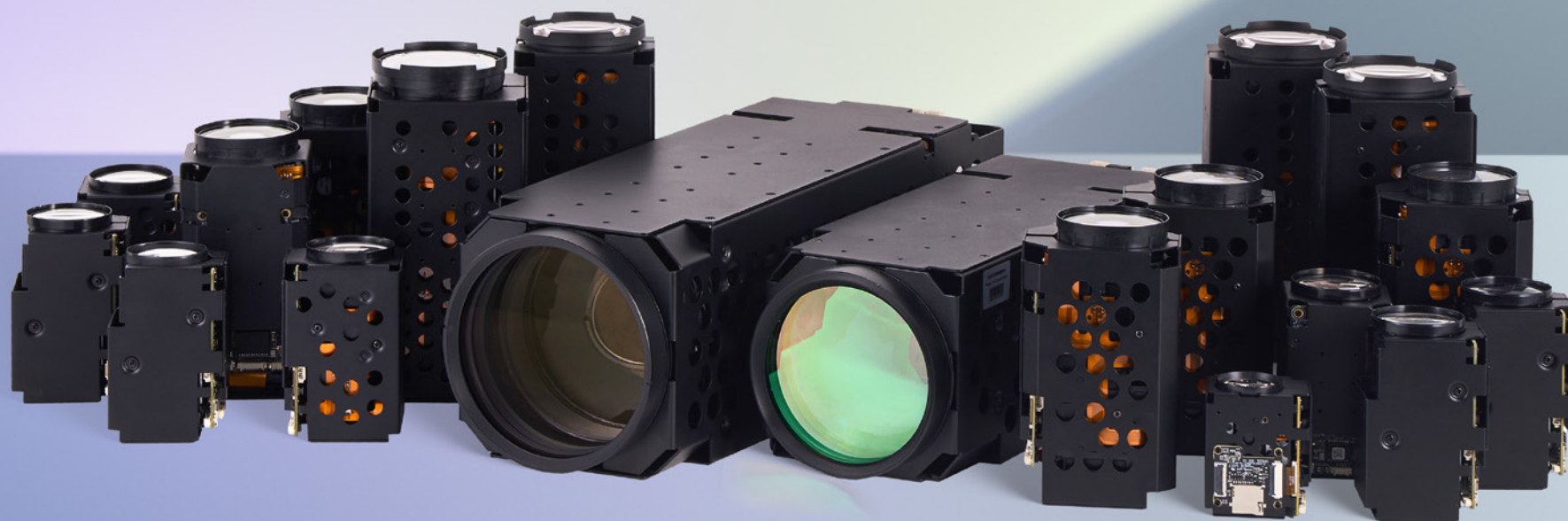


VISHEEN

CAMERA MODULE PRODUCT PORTFOLIO

2024 H2



viewsheen.com

About VISHEEN

Leading Provider of Long-Range
and Multispectral Cameras

50+

Countries and Regions

1

Super long-range camera
module Market share

40%+

Overseas Market Consumption

60%+

R&D Ratio

Founded in 2016, **Hangzhou View Sheen Technology Co., Ltd.** is a national high-tech enterprise specializing in the development of zoom camera modules. With over 60% of our employees dedicated to R&D and 60%-80% of our annual net profit invested in innovation, we have established ourselves as a global leader in zoom camera technology. Our expertise extends beyond the visible and NIR bands, encompassing LWIR, SWIR, and MWIR as well. We are also at the forefront of AI algorithm development, leveraging its power to enhance our camera solutions. View Sheen Technology's camera modules are renowned for their superior performance and reliability, serving a diverse range of applications, including: UAV/Drone and Robot, Fire Detection and Electrical Inspection, Surveillance and Security, Search and Rescue, Marine and Land Navigation

With a global presence spanning over 50 countries and regions, View Sheen Technology is committed to providing innovative, complete, and customer-centric solutions that empower our partners to achieve their goals.

- **2016**

Foundation and Launched the UAV gimbal camera module

- **2017**

Launched the first generation of long range camera modules

- **2018**

Launched the world's first 540mm long range camera module

- **2019**

Launched the world's first 4MP 920mm ultra long range camera module

- **2020**

Launched industry's first single IP dual-channel EO/IR camera module

- **2021**

Launched the world's first 850mm OIS(Optical Image Stabilization) ultra long range camera module

Successfully obtained ISO9001 quality system certification

- **2022**

Launched the world's first SVGA resolution 510mm with 30x optical zoom SWIR camera module

Launched the industry's longest focal length 350mm 7x optical zoom SVGA LWIR thermal module

- **2023**

Launched the world's first AI-ISP color-view 550mm long range camera module

The shipment volume of camera module over 750mm focal lens ranks first in the industry


- **2024**

Launched the world's first 4MP 1200mm ultra long range camera module

History

Contents

01 / Technology

- 06 Core Technology
- 08 AI Analytics
- 09 System Integrations
- 10 Super Long Range
- 11 VMAGE AI-ISP | 
- 12 NDAA
- 13 EO/IR

02 / Products

15 Zoom Camera Module

- 16 SCZ-K Series
- 16 SCZ-800 Series
- 17 SCZ-300 Series
- 19 SCZ-200 Series
- 20 SCZ-100 Series
- 22 SCZ-C Series
- 23 UAZ Series

24 Thermal Module

- 25 Uncooled LWIR
- 27 Cooled MWIR
- 28 EO/IR

30 SWIR Camera Module

32 Drone Gimbal Camera

- 33 Visible
- 34 EO/IR

35 Accessory

- 35 Laser IR Illuminator
- 35 Laser Range Finder
- 35 Camera Expansion Board

01

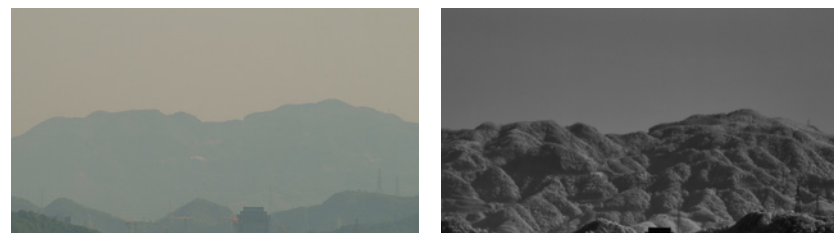
Technology

Core Technology

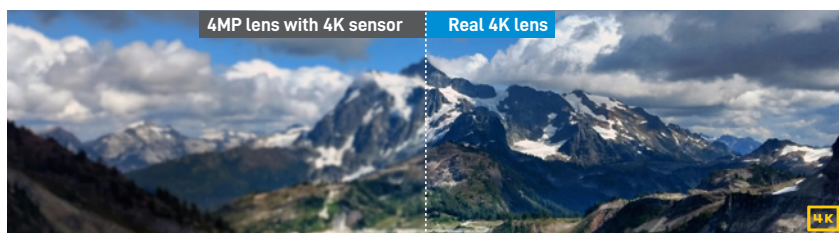
01/Advanced Optical Design



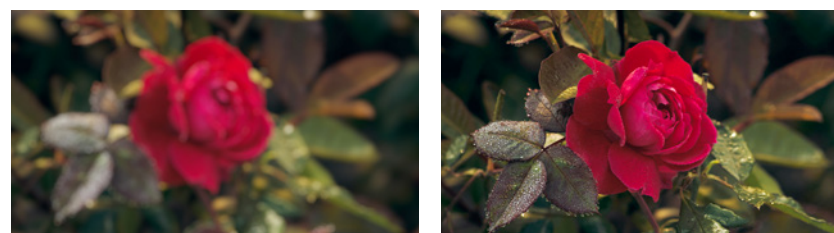
Super Long Range



NIR Optical Defog



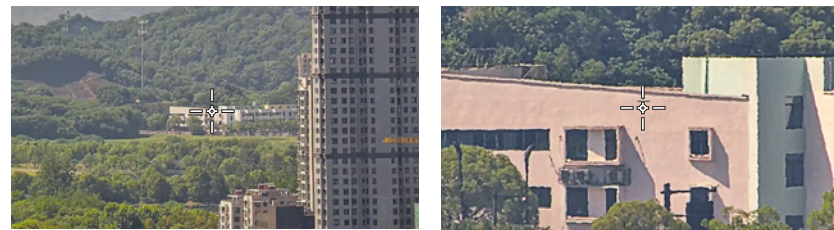
Ultra High Definition



Temperature Compensation



Optical Image Stabilization



Optical Axis Consistency

02/ High-Speed AF System



High Accuracy Focusing System

Stepping motor + Screw drive
0.01mm high-precision



Advanced Focusing Algorithm

Full-range clear zoom technology

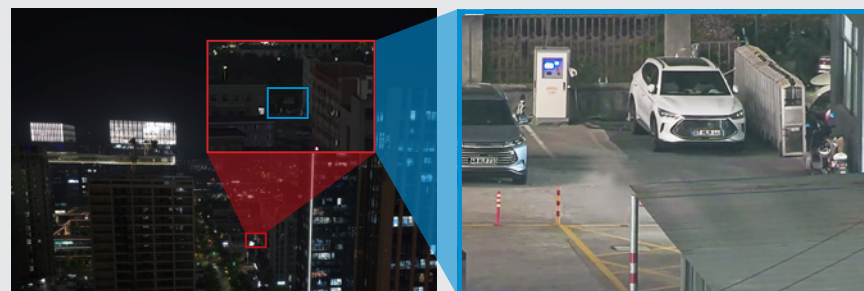


Super Long Focus&Zoom Life

03/ Advanced Image Sensor

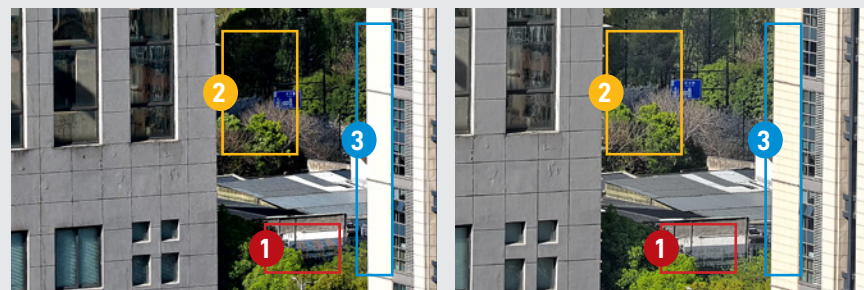
STARVIS**STARVIS 2****Pregius****SenSWIR**

04/ VMAGE AI-ISP



Color View | VMAGE

AI NR, SNR increased by 4 times in low-light scenes



HDR | VMAGE

AI HDR, Dynamic range increased by 12dB in high-contrast scenes

AI Analytics

01/ Perimeter Intrusion Detection



Tripwire

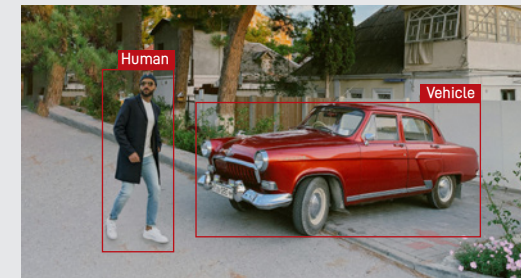


Virtual Fence



Area Intrusion

02/ Human & Vehicle Detection and Classification



03/ Fire Prevention



Fire & Smoke Detection

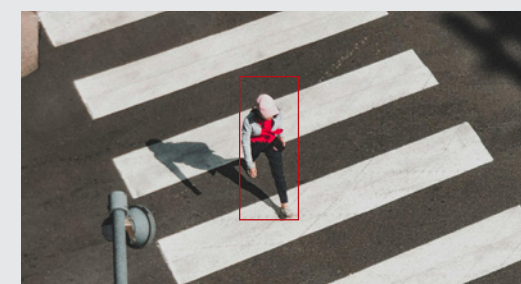


Smoking & Calling Detection



Fire Detection

04/ Smart Tracking



05/ Abnormal Behavior Detection



Loitering Detection



Fast Moving



Crowd Gathering



Parking Detection



Abandoned Object



Missing Object

System Integrations

Interoperability

ONVIF

API

SDK

VISCA

PELCO

Video Connectivity

Out
ETHERNET/MIPI/LVDS

In
BT601/USB

ONE IP
BISPECTRAL SOLUTION

Cybersecurity



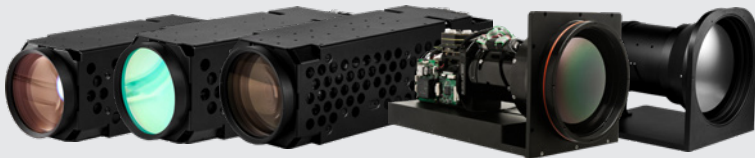
NDAA Compliant



Super Long Range

Redefining Surveillance Boundaries

When perimeter security demands extend beyond conventional limits, VISHEEN's ultra-long-range zoom camera modules emerge as the undisputed solution. Our cutting-edge technology empowers you to safeguard vast areas with unparalleled clarity and dependability.



SCZ-K Series

VS-SCZ4060VIE-8

SCZ-800 Series

VS-SCZ8052KI-8

VS-SCZ4052YIO-8

VS-SCZ2057YIO-8

VS-SCZ3052NIO-G

Uncooled LWIR

VS-SCMA3507NR2-D

Cooled MWIR

VS-MIM6900ANPF-D

SWIR

VS-MIZA030NM

Unmatched Coverage

Experience industry-leading zoom capabilities that extend surveillance horizons beyond 10KM, ensuring comprehensive coverage of expansive perimeters.

Exceptional Versatility

Choose from visible, uncooled long-wave infrared (LWIR), and cooled mid-wave infrared (MWIR) options to optimize surveillance for diverse environments and applications.

Unwavering Reliability

Our robust modules are engineered to withstand the harshest conditions, delivering unwavering performance for mission-critical surveillance tasks.

VMAGE AI-ISP



Harness the power of artificial intelligence (AI) to elevate your surveillance capabilities with our cutting-edge VMAGE AI ISP. Our AI-powered solutions deliver exceptional image quality and advanced analytics, empowering you to safeguard your world with unprecedented clarity and intelligence.



VMAGE AI-ISP Series

VS-SCZ2010YIE
VS-SCZ2057YIO-8
VS-SCZ4037YIB-8
VS-SCZ4055VIE-8

VS-SCZ4052YIO-8
VS-SCZ4060VIE-8
VS-SCZ5032YIE
VS-SCZ8050VIE-8

AI-Enhanced Image Processing

AI Noise Reduction: Experience pristine images, free from distracting noise, even in low-light conditions.

AI Wide Dynamic Range: Capture exceptional detail in scenes with extreme lighting variations.

AI-Driven Image Recognition

Person/Vehicle Detection: Identify and track people and vehicles with unmatched accuracy.

Behavior Recognition: Uncover suspicious activities and potential threats in real time.

Unleash the Power of AI for Surveillance Excellence

Enhanced Situational Awareness: Gain real-time insights into your surroundings, enabling proactive security measures.

Reduced False Alarms: Minimize disruptions and optimize resource allocation.

NDAA

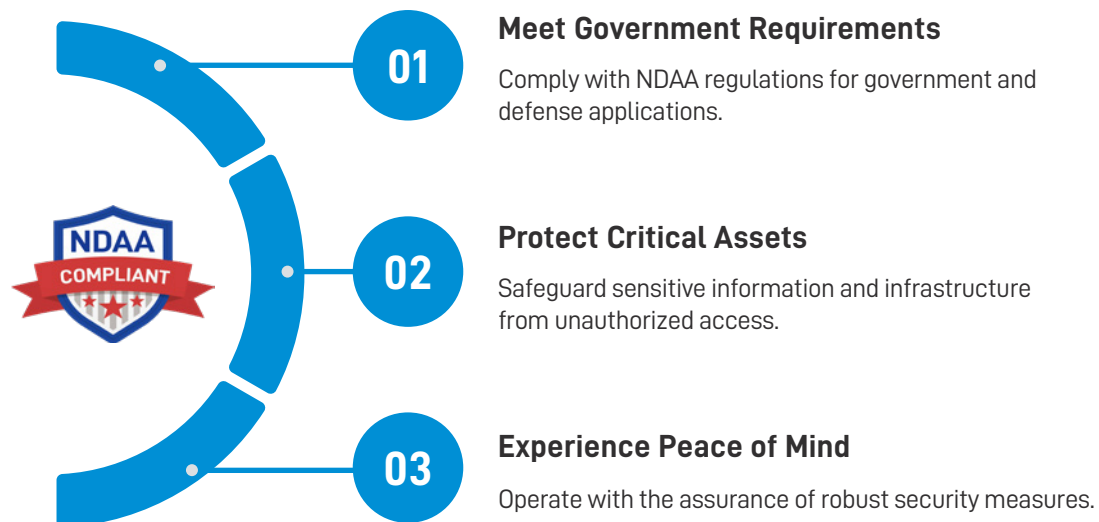
Ensure unwavering security and compliance in critical environments with our NDAA-compliant camera modules. Our rigorously tested solutions adhere to stringent NDAA standards, empowering you to protect sensitive data and infrastructure with utmost confidence.

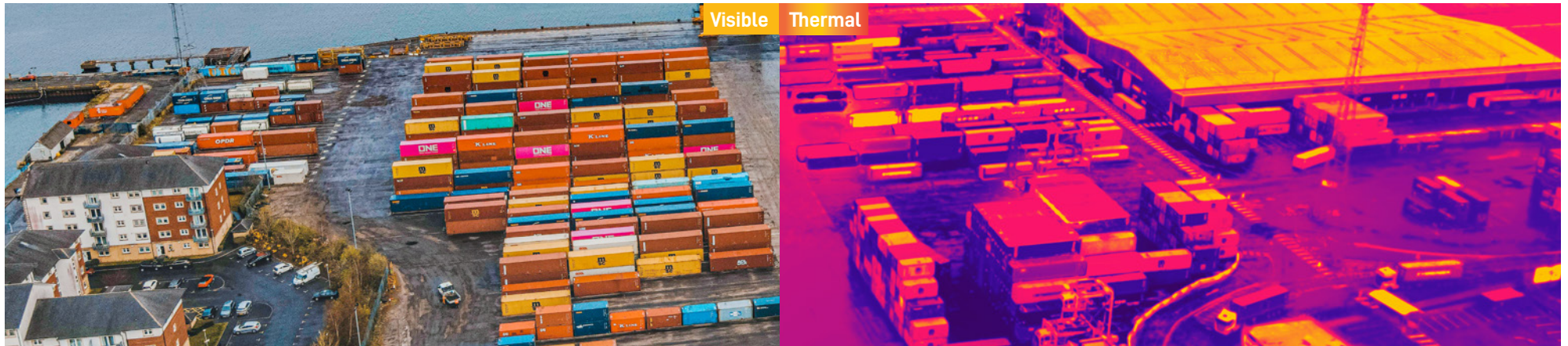
NDAA Series

VS-SCZ8052KI-8 VS-SCZ/UAZ8010KI
VS-SCZ4037KI-8 VS-SCZ/UAZ8003K
VS-SCZ2044KI-8
VS-SCZ2030KM
VS-SCZ/UAZ8020KI



NDAA Compliance for Uncompromised Security





EO/IR

Experience the pinnacle of bi-spectrum surveillance with EO/IR series, featuring our groundbreaking "single IP dual channels" integration. Our innovative technology seamlessly combines visible light and thermal imaging modules into a single dual-optical module, accessible through a single IP address for effortless control and synchronized video streaming.

EO/IR Module Series

VS-SCZ5035YCE-RV6

EO/IR Drone Gimbal Series

VS-SCZ5035YCE-RV6/RT6

VS-UAP8003K-RV3/RT3

VS-UAP2030NA-RV3/RT3

VS-UAP2030-GV6025

VS-UAP2030-GV6019-L15

VS-UAP2010-GV6019-L15-P



Unparalleled Simplicity, Unmatched Performance

01

Single IP Convenience

Manage both visible and thermal imaging streams with a single IP address.

02

Seamless Integration

Simplify system integration and reduce cabling requirements.

03

Enhanced Situational Awareness

Gain comprehensive insights from both visual and thermal perspectives.

02

Products

Zoom Camera Module

Elevate Your Surveillance with VISHEEN'S Versatile Zoom Camera Modules

Engineered to meet the demands of modern security systems, our zoom camera modules offer exceptional performance and flexibility. With a wide range of resolutions from 2MP to 8MP and focal lengths up to 1200mm, our modules cater to diverse surveillance needs.



Advanced Features for Superior Performance

- **Global Shutter:** Eliminate motion blur for crystal-clear images.
- **Optical Image Stabilization (OIS):** Ensure steady footage, even in challenging conditions.
- **AI Image Processing:** leverages deep learning to significantly enhance image quality, reducing noise, expanding dynamic range, and delivering more detailed image.

Seamless Integration and Customization

- **Flexible Interfaces:** Choose from MIPI, LVDS, and network interfaces for easy integration.
- **Industry Standards:** Support VISCA/PELCO and ONVIF protocols for compatibility with existing systems.
- **Tailored Solutions:** Our modules can be customized to meet your specific requirements.

SCZ-K Series

SCZ-800 Series



VS-SCZ4060VIB-8



VS-SCZ8088NM-8



VS-SCZ4088NM-8



VS-SCZ8052KI-8



VS-SCZ4052YIO-8

Image Sensor	1/1.8" 4MP CMOS STARVIS 2	1/1.8" 8MP CMOS STARVIS	1/1.8" 4MP CMOS STARVIS	1/1.8" 8MP CMOS STARVIS 2	1/1.8" 4MP CMOS STARVIS
Focal Length	20 - 1200mm, 60x Optical	11.3 - 1000mm, 88x Optical	10.8 - 950mm, 88x Optical	15 - 775mm, 52x Optical	15 - 775mm, 52x Optical
Max. Aperture	F2.9 - F11	F2.1 - F8.1	F2.1 - F7.5	F2.8 - F8.2	F2.8 - F8.2
Angle of View	HFoV: 22.1° - 0.37° VFoV: 12.6° - 0.21°	HFoV: 37.5° - 0.44° VFoV: 21.6° - 0.25°	HFoV: 39.7° - 0.47° VFoV: 23.1° - 0.27°	HFoV: 28.7° - 0.57° VFoV: 16.4° - 0.32°	HFoV: 29.1° - 0.58° VFoV: 16.7° - 0.33°
Min. Illumination	Color: 0.01Lux/F2.9	Color: 0.1Lux/F2.1	Color: 0.05Lux/F2.1	Color: 0.05Lux/F2.8	Color: 0.01Lux/F2.8
Max. Resolution / Frame Rate	Network: 2688x1520 (4MP)@50/60fps MIPI: 2688x1520 (4MP)@50/60fps	Network: 3840x2160 (4K)@25/30fps LVDS: 1920x1080 (1080P)@25/30fps	Network: 2688x1520 (4MP)@25/30fps LVDS: 1920x1080 (1080P)@25/30fps	Network: 3840x2160 (4K)@25/30fps LVDS: 1920x1080 (1080P)@25/30fps	Network: 2688x1520 (4MP)@50/60fps MIPI: 2688x1520 (4MP)@50/60fps
Image Stabilization	EIS(built-in gyro sensor)	EIS	EIS	EIS	OIS + EIS(built-in gyro sensor)
Defog	Optical (NIR) + Digital	Optical (NIR) + Digital	Optical (NIR) + Digital	Optical (NIR) + Digital	Optical (NIR) + Digital
Analytics	Perimeter Intrusion Detection Abnormal Behavior Detection Smart Tracking Human & Vehicle Detection and Classification Fire & Smoke Detection Smoking & Calling Detection	Perimeter Intrusion Detection Abnormal Behavior Detection Smart Tracking	Perimeter Intrusion Detection Abnormal Behavior Detection Smart Tracking	Perimeter Intrusion Detection Abnormal Behavior Detection Smart Tracking Human & Vehicle Detection and Classification Fire & Smoke Detection Smoking & Calling Detection	Perimeter Intrusion Detection Abnormal Behavior Detection Smart Tracking Human & Vehicle Detection and Classification Fire & Smoke Detection Smoking & Calling Detection
Video Output	10/100M Ethernet, MIPI	10/100M Ethernet, LVDS	10/100M Ethernet, LVDS	10/100M Ethernet, LVDS	10/100M Ethernet, MIPI
Thermal Image Input	BT601/USB	USB	USB	USB	BT601/USB
Audio	1 Line In / 1 Line Out	1 Line In / 1 Line Out	1 Line In / 1 Line Out	1 Line In / 1 Line Out	1 Line In / 1 Line Out
Serial Communication	TTL x 2 (VISCA & Pelco)	TTL x 2 (VISCA & Pelco)	TTL x 2 (VISCA & Pelco)	TTL x 2 (VISCA & Pelco)	TTL x 2 (VISCA & Pelco)
Edge Storage	Micro SD/SDHC/SDXC slot, up to 1TB	Micro SD/SDHC/SDXC slot, up to 1TB	Micro SD/SDHC/SDXC slot, up to 1TB	Micro SD/SDHC/SDXC slot, up to 1TB	Micro SD/SDHC/SDXC slot, up to 1TB
Power	9V - 12VDC: Typical 4.8W, Max 10.2W	9V - 12VDC: Typical 6.5W, Max 8.4W	9V - 12VDC: Typical 6.5W, Max 8.4W	9V - 12VDC: Typical 4W, Max 9.5W	9V - 12VDC: Typical 4.5W, Max 9.8W
Dimensions(LxWxH)	400 x 125 x 125mm	381 x 150 x 142.5mm	381 x 150 x 142.5mm	320 x 109 x 109mm	320 x 109 x 109mm
Weight	5.2kg	5.6kg	5.6kg	3.1kg	3.2kg
DORI Distance(M)*	16552 / 6568 / 3310 / 1655	2000 / 7937 / 4000 / 2000	13103 / 5200 / 2621 / 1310	15500 / 6151 / 3100 / 1550	10690 / 4242 / 2138 / 1069
Special Features	AI-ISP, 40g Shock	4K	/	4K, NDAA	AI-ISP, Optical Image Stabilization

SCZ-800 Series					SCZ-300 Series
<div></div>					
<div>VS-SCZ2057YIO-8VS-SCZ4052NM-8VS-SCZ2057NM-8VS-SCZ3052NIO-GVS-SCZ8040VIE-8</div>					
Image Sensor	1/1.8" 4MP CMOS 	1/1.8" 4MP CMOS 	1/1.8" 4MP CMOS 	1/1.8" 3MP CMOS 	1/1.2" 8MP CMOS
Focal Length	15 - 855mm, 57× Fusion Zoom	15 - 775mm, 52× Optical	15 - 855mm, 57× Fusion Zoom	15 - 775mm, 52× Optical	10 - 400mm, 40x Optical
Max. Aperture	F2.8 - F8.2	F2.8 - F8.2	F2.8 - F8.2	F2.8 - F8.2	F1.5 - F5.5
Angle of View	HFoV: 29.1° - 0.53° VFoV: 16.7° - 0.3°	HFoV: 29.1° - 0.58° VFoV: 16.7° - 0.33°	HFoV: 29.1° - 0.53° VFoV: 16.7° - 0.3°	HFoV: 26.5° - 0.52° VFoV: 20° - 0.39°	HFoV: 58.2° - 1.6° VFoV: 34.8° - 0.9°
Min. Illumination	Color: 0.01Lux/F2.8	Color: 0.05Lux/F2.8	Color: 0.05Lux/F2.8	Color: 0.05Lux/F2.8	Color: 0.001Lux/F1.5
Max. Resolution / Frame Rate	Network: 1920×1080 (1080P)@50/60fps MIPI: 1920×1080 (1080P)@50/60fps	Network: 2688x1520 (4MP)@25/30fps LVDS: 1920x1080 (1080P)@25/30fps	Network: 1920x1080 (1080P) @25/30fps LVDS: 1920x1080 (1080P)@25/30fps	Network: 2048x1536 (3MP)@25/30fps LVDS: 1920x1080 (1080P)@25/30fps	Network: 3840x2160 (4K)@25/30fps MIPI: 3840x2160 (4K)@25/30fps
Image Stabilization	OIS + EIS(built-in gyro sensor)	EIS	EIS	OIS + EIS	EIS(built-in gyro sensor)
Defog	Optical (NIR) + Digital	Optical (NIR) + Digital	Optical (NIR) + Digital	Optical (NIR) + Digital	Optical (NIR) + Digital
Analytics	Perimeter Intrusion Detection Abnormal Behavior Detection Smart Tracking Human & Vehicle Detection and Classification Fire & Smoke Detection Smoking & Calling Detection	Perimeter Intrusion Detection Abnormal Behavior Detection Smart Tracking	Perimeter Intrusion Detection Abnormal Behavior Detection Smart Tracking	Perimeter Intrusion Detection Abnormal Behavior Detection Smart Tracking Human & Vehicle Detection and Classification Fire & Smoke Detection Smoking & Calling Detection	Perimeter Intrusion Detection Abnormal Behavior Detection Smart Tracking Human & Vehicle Detection and Classification Fire & Smoke Detection Smoking & Calling Detection
Video Output	10/100M Ethernet, MIPI	10/100M Ethernet, LVDS	10/100M Ethernet, LVDS	10/100M Ethernet, LVDS	10/100M Ethernet, MIPI
Thermal Image Input	BT601/USB	USB	USB	USB	BT601/USB
Audio	1 Line In / 1 Line Out	1 Line In / 1 Line Out	1 Line In / 1 Line Out	1 Line In / 1 Line Out	1 Line In / 1 Line Out
Serial Communication	TTL x 2 (VISCA & Pelco)	TTL x 2 (VISCA & Pelco)	TTL x 2 (VISCA & Pelco)	TTL x 2 (VISCA & Pelco)	TTL x 2 (VISCA & Pelco)
Edge Storage	Micro SD/SDHC/SDXC slot, up to 1TB	Micro SD/SDHC/SDXC slot, up to 1TB	Micro SD/SDHC/SDXC slot, up to 1TB	Micro SD/SDHC/SDXC slot, up to 1TB	Micro SD/SDHC/SDXC slot, up to 1TB
Power	9V - 12VDC: Typical 4.5W, Max 9.8W	9V - 12VDC: Typical 4W, Max 9.5W	9V - 12VDC: Typical 4W, Max 9.5W	9V - 12VDC: Typical 4W, Max 9.5W	9V - 12VDC: Typical 5.5W, Max 10.5W
Dimensions(LxWxH)	320 x 109 x 109mm	320 x 109 x 109mm	320 x 109 x 109mm	320 x 109 x 109mm	178 x 77.4 x 83.5mm
Weight	3.2kg	3.1kg	3.1kg	3.1kg	1.1kg
DORI Distance(M)*	10690 / 4242 / 2138 / 1069	10690 / 4242 / 2138 / 1069	10690 / 4242 / 2138 / 1069	8986 / 3566 / 1797 / 899	6897 / 2737 / 1379 / 690
Special Features	AI-ISP, Optical Image Stabilization	/	/	Global Shutter	4K, AI-ISP, ColorView, 40g Shock

SCZ-300 Series



VS-SCZ4055VIE-8



VS-SCZ8050NM-8



VS-SCZ2090NM-8



VS-SCZ4050NM-8



VS-SCZ2068NM-8

Image Sensor	1/1.2" 8MP CMOS	1/1.8" 8MP CMOS STARVIS	1/1.8" 8MP CMOS STARVIS	1/1.8" 4MP CMOS STARVIS	1/1.8" 4MP CMOS STARVIS
Focal Length	10 - 550mm, 55x Fusion Zoom	6 - 300mm, 50x Optical	6 - 540mm, 90x Fusion Zoom	6 - 300mm, 50x Optical	6 - 408mm, 68x Fusion Zoom
Max. Aperture	F1.5 - F5.5	F1.4 - F4.5	F1.4 - F4.5	F1.4 - F4.5	F1.4 - F4.5
Angle of View	HFoV: 58.2° - 1.16° VFoV: 34.8° - 0.65°	HFoV: 65.2° - 1.4° VFoV: 39.6° - 0.8°	HFoV: 65.2° - 0.8° VFoV: 39.6° - 0.4°	HFoV: 66° - 1.4° VFoV: 40.3° - 0.8°	HFoV: 66° - 1.1° VFoV: 40.3° - 0.6°
Min. Illumination	Color: 0.001Lux/F1.5	Color: 0.01Lux/F1.4	Color: 0.01Lux/F1.4	Color: 0.005Lux/F1.4	Color: 0.005Lux/F1.4
Max. Resolution / Frame Rate	Network: 2688x1520 (4MP)@25/30fps MIPI: 2688x1520 (4MP)@25/30fps	Network: 3840x2160 (4K)@25/30fps LVDS: 1920x1080 (1080P)@25/30fps	Network: 1920x1080 (1080P)@25/30fps LVDS: 1920x1080 (1080P)@25/30fps	Network: 2688x1520 (4MP)@25/30fps LVDS: 1920x1080 (1080P)@25/30fps	Network: 1920x1080 (1080P)@25/30fps LVDS: 1920x1080 (1080P)@25/30fps
Image Stabilization	EIS(built-in gyro sensor)	EIS	EIS	EIS	EIS
Defog	Optical (NIR) + Digital	Optical (NIR) + Digital	Optical (NIR) + Digital	Optical (NIR) + Digital	Optical (NIR) + Digital
Analytics	Perimeter Intrusion Detection Abnormal Behavior Detection Smart Tracking Human & Vehicle Detection and Classification Fire & Smoke Detection Smoking & Calling Detection	Perimeter Intrusion Detection Abnormal Behavior Detection Smart Tracking	Perimeter Intrusion Detection Abnormal Behavior Detection Smart Tracking	Perimeter Intrusion Detection Abnormal Behavior Detection Smart Tracking	Perimeter Intrusion Detection Abnormal Behavior Detection Smart Tracking
Video Output	10/100M Ethernet, MIPI	10/100M Ethernet, LVDS	10/100M Ethernet, LVDS	10/100M Ethernet, LVDS	10/100M Ethernet, LVDS
Thermal Image Input	BT601/USB	USB	USB	USB	USB
Audio	1 Line In / 1 Line Out	1 Line In / 1 Line Out	1 Line In / 1 Line Out	1 Line In / 1 Line Out	1 Line In / 1 Line Out
Serial Communication	TTL x 2 (VISCA & Pelco)	TTL x 2 (VISCA & Pelco)	TTL x 2 (VISCA & Pelco)	TTL x 2 (VISCA & Pelco)	TTL x 2 (VISCA & Pelco)
Edge Storage	Micro SD/SDHC/SDXC slot, up to 1TB	Micro SD/SDHC/SDXC slot, up to 1TB	Micro SD/SDHC/SDXC slot, up to 1TB	Micro SD/SDHC/SDXC slot, up to 1TB	Micro SD/SDHC/SDXC slot, up to 1TB
Power	9V - 12VDC: Typical 5.5W, Max 10.5W	9V - 12VDC: Typical 5W, Max 6W	9V - 12VDC: Typical 4.2W, Max 7.3W	9V - 12VDC: Typical 4.5W, Max 5.5W	9V - 12VDC: Typical 5W, Max 6W
Dimensions(LxWxH)	178 x 77.4 x 83.5mm	175.3 x 72.2 x 77.3mm	175.3 x 72.2 x 77.3mm	175.3 x 72.2 x 77.3mm	175.3 x 72.2 x 77.3mm
Weight	1.1kg	900g	900g	900g	900g
DORI Distance(M)*	6897 / 2737 / 1379 / 690	6000 / 2381 / 1200 / 600	6000 / 2381 / 1200 / 600	4138 / 1642 / 828 / 414	4138 / 1642 / 828 / 414
Special Features	AI-ISP, ColorView, 40g Shock	4K	/	/	/

SCZ-300 Series			SCZ-200 Series		
<div> VS-SCZ3050NM-8</div> <div> VS-SCZ2058KIO-8</div>			<div> VS-SCZ8037KI-8</div> <div> VS-SCZ4037YIB-8</div> <div> VS-SCZ4037KI-8</div>		
Image Sensor	1/1.8" 3MP CMOS Pregius	1/1.8" 4MP CMOS STARVIS	1/1.8" 8MP CMOS STARVIS 2	1/1.8" 4MP CMOS STARVIS	1/1.8" 4MP CMOS STARVIS
Focal Length	6 - 300mm, 50x Optical	6.3 - 365mm, 58x Fusion Zoom	6.5 - 240mm, 37x Optical	6.5 - 240mm, 37x Optical	6.5 - 240mm, 37x Optical
Max. Aperture	F1.4 - F4.5	F1.5 - F6.4	F1.5 - F4.8	F1.5 - F4.8	F1.5 - F4.8
Angle of View	HFoV: 60.9° - 1.3° VFoV: 47.6° - 1.0°	HFoV: 63.4° - 1.2° VFoV: 38.3° - 0.6°	HFoV: 61.1° - 1.8° VFoV: 36.7° - 1.0°	HFoV: 61.9° - 1.9° VFoV: 37.4° - 1.0°	HFoV: 61.9° - 1.9° VFoV: 37.4° - 1.0°
Min. Illumination	Color: 0.002Lux/F1.4	Color: 0.005Lux/F1.5	Color: 0.01Lux/F1.5	Color: 0.001Lux/F1.5	Color: 0.005Lux/F1.5
Max. Resolution / Frame Rate	Network: 2048x1536 (3MP)@25/30fps LVDS: 1920x1080 (1080P)@25/30fps	Network: 1920x1080 (1080P)@50/60fps LVDS: 1920x1080 (1080P)@50/60fps	Network: 3840x2160 (4K)@25/30fps LVDS: 1920x1080 (1080P)@25/30fps	Network: 2688x1520 (4MP)@50/60fps MIPI: 2688x1520 (4MP)@50/60fps	Network: 2688x1520 (4MP)@50/60fps LVDS: 1920x1080 (1080P)@25/30fps
Image Stabilization	EIS	OIS + EIS	EIS	EIS(built-in gyro sensor)	EIS
Defog	Optical (NIR) + Digital	Optical (NIR) + Digital	Optical (NIR) + Digital	Optical (NIR) + Digital	Optical (NIR) + Digital
Analytics	Perimeter Intrusion Detection Abnormal Behavior Detection Smart Tracking	Perimeter Intrusion Detection Abnormal Behavior Detection Smart Tracking Human & Vehicle Detection and Classification Fire & Smoke Detection Smoking & Calling Detection	Perimeter Intrusion Detection Abnormal Behavior Detection Smart Tracking Human & Vehicle Detection and Classification Fire & Smoke Detection Smoking & Calling Detection	Perimeter Intrusion Detection Abnormal Behavior Detection Smart Tracking Human & Vehicle Detection and Classification Fire & Smoke Detection Smoking & Calling Detection	Perimeter Intrusion Detection Abnormal Behavior Detection Smart Tracking Human & Vehicle Detection and Classification Fire & Smoke Detection Smoking & Calling Detection
Video Output	10/100M Ethernet, LVDS	10/100M Ethernet, LVDS	10/100M Ethernet, LVDS	10/100M Ethernet, MIPI	10/100M Ethernet, LVDS
Thermal Image Input	USB	USB	BT601	BT601/USB	BT601/USB
Audio	1 Line In / 1 Line Out	1 Line In / 1 Line Out	1 Line In / 1 Line Out	1 Line In / 1 Line Out	1 Line In / 1 Line Out
Serial Communication	TTL x 2 (VISCA & Pelco)	TTL x 2 (VISCA & Pelco)	TTL x 2 (VISCA & Pelco)	TTL x 2 (VISCA & Pelco)	TTL x 2 (VISCA & Pelco)
Edge Storage	Micro SD/SDHC/SDXC slot, up to 1TB	Micro SD/SDHC/SDXC slot, up to 1TB	Micro SD/SDHC/SDXC slot, up to 1TB	Micro SD/SDHC/SDXC slot, up to 1TB	Micro SD/SDHC/SDXC slot, up to 1TB
Power	9V - 12VDC: Typical 5W, Max 6W	9V - 12VDC: Typical 3.5W, Max 7.1W	9V - 12VDC: Typical 4.5W, Max 5.5W	9V - 12VDC: Typical 4.5W, Max 5.5W	9V - 12VDC: Typical 4.5W, Max 5.5W
Dimensions(LxWxH)	175.3 x 72.2 x 77.3mm	145 x 82 x 96mm	138 x 66 x 76mm	138 x 66 x 76mm	138 x 66 x 76mm
Weight	900g	930g	620g	620g	620g
DORI Distance(M)*	3478 / 1380 / 696 / 348	3972 / 1577 / 794 / 397	4800 / 1905 / 960 / 480	3310 / 1314 / 662 / 331	3310 / 1314 / 662 / 331
Special Features	Global Shutter	NDAA, Optical Image Stabilization	4K, NDAA	AI-ISP, ColorView	NDAA

SCZ-200 Series



VS-SCZ2044KI-8

SCZ-100 Series



VS-SCZ8020KI



VS-SCZ4020KI



VS-SCZ5035YCE-5004

Image Sensor	1/1.8" 4MP CMOS STARVIS	1/1.8" 8MP CMOS STARVIS 2	1/1.8" 4MP CMOS STARVIS	1/2.8" 5MP CMOS STARVIS 2	1/2.8" 5MP CMOS STARVIS 2
Focal Length	6.9 - 303mm, 44x Fusion Zoom	6.5 - 130mm, 20x Optical	6.5 - 130mm, 20x Optical	Zoom: 4.8 - 168mm, 35x Optical	Panoramic: 4mm
Max. Aperture	F1.5 - F4.8	F1.5 - F4.0	F1.5 - F4.0	F1.6 - F4.4	F1.0
Angle of View	HFoV: 58.9° - 1.5° VFoV: 35.4° - 0.8°	HFoV: 61.1° - 3.4° VFoV: 36.7° - 1.9°	HFoV: 61.8° - 3.4° VFoV: 37.4° - 1.9°	HFoV: 56.1° - 1.75° VFoV: 43.6° - 1.31°	FoV: 78.8° x 55.8°
Min. Illumination	Color: 0.005Lux/F1.5	Color: 0.01Lux/F1.5	Color: 0.005Lux/F1.5	Color: 0.001Lux/F1.6	Color: 0.0001Lux/F1.0
Max. Resolution / Frame Rate	Network: 1920x1080 (1080P)@50/60fps LVDS: 1920x1080 (1080P)@25/30fps	Network: 3840x2160 (4K)@25/30fps	Network: 2688x1520 (4MP)@50/60fps	Network: 2560*1920@25fps, 2560*1440@25/30fps	Network: 2560*1920@25fps, 2560*1440@25/30fps
Image Stabilization	EIS	EIS	EIS	EIS	
Defog	Optical (NIR) + Digital	Digital	Digital	Digital	
Analytics	Perimeter Intrusion Detection Abnormal Behavior Detection Smart Tracking Human & Vehicle Detection and Classification Fire & Smoke Detection Smoking & Calling Detection	Perimeter Intrusion Detection Abnormal Behavior Detection Smart Tracking Human & Vehicle Detection and Classification Fire & Smoke Detection Smoking & Calling Detection	Perimeter Intrusion Detection Abnormal Behavior Detection Smart Tracking Human & Vehicle Detection and Classification Fire & Smoke Detection Smoking & Calling Detection	Perimeter Intrusion Detection Abnormal Behavior Detection Smart Tracking Human & Vehicle Detection and Classification Fire & Smoke Detection Smoking & Calling Detection	
Video Output	10/100M Ethernet, LVDS	10/100M Ethernet	10/100M Ethernet	10/100M Ethernet	
Thermal Image Input	BT601/USB	BT601/USB	BT601/USB	BT601/USB	
Audio	1 Line In / 1 Line Out	1 Line In / 1 Line Out	1 Line In / 1 Line Out	1 Line In / 1 Line Out	
Serial Communication	TTL x 2 (VISCA & Pelco)	TTL x 2 (VISCA & Pelco)	TTL x 2 (VISCA & Pelco)	TTL x 2 (VISCA & Pelco)	
Edge Storage	Micro SD/SDHC/SDXC slot, up to 1TB	Micro SD/SDHC/SDXC slot, up to 1TB	Micro SD/SDHC/SDXC slot, up to 1TB	Built-in EMMC 50GB	
Power	9V - 12VDC: Typical 4.5W, Max 5.5W	9V - 12VDC: Typical 4.5W, Max 5.5W	9V - 12VDC: Typical 4.5W, Max 5.5W	9V - 12VDC: Typical 4.2W, Max 5.8W	
Dimensions(LxWxH)	138 x 66 x 76mm	97.2 x 52.2 x 60.3mm	97.2 x 52.2 x 60.3mm	96.3 x 52 x 58.6mm	27.9 x 34 x 34mm
Weight	620g	330g	330g	300g	
DORI Distance(M)*	3310 / 1314 / 662 / 331	2600 / 1032 / 520 / 260	1793 / 712 / 359 / 179	3360 / 1333 / 672 / 336	
Special Features	NDAA	4K, NDAA	NDAA	AI-ISP, ColorView	

SCZ-100 Series



VS-SCZ5035YCE



VS-SCZ5032YIE



VS-SCZ4025KI



VS-SCZ4025KM



VS-SCZ2032KI

Image Sensor	1/2.8" 5MP CMOS	1/2.8" 5MP CMOS	1/2.9" 4MP CMOS	1/2.9" 4MP CMOS	1/2.8" 2MP CMOS
Focal Length	4.8 - 168mm, 35x Optical	4.7 - 150mm, 32x Optical	5 - 125mm, 25x Optical	5 - 125mm, 25x Optical	4.7- 150mm, 32x Optical
Max. Aperture	F1.6 - F4.4	F1.6 - F4.3	F1.5 - F3.8	F1.5 - F3.8	F1.5 - F4.0
Angle of View	HFoV: 56.1° - 1.75° VFoV: 43.6° - 1.31°	HFoV: 57.1° - 1.96° VFoV: 44.4° - 1.47°	HFoV: 56.5° - 2.4° VFoV: 33.8° - 1.3°	HFoV: 56.5° - 2.4° VFoV: 33.8° - 1.3°	HFoV: 61.3° - 2.25° VFoV: 36.9° - 1.27°
Min. Illumination	Color: 0.001Lux/F1.6	Color: 0.001Lux/F1.6	Color: 0.05Lux/F1.5	Color: 0.05Lux/F1.5	Color: 0.005Lux/F1.5
Max. Resolution / Frame Rate	Network: 2560x1920 (5MP)@50fps, 2560x1440 (4MP)@50/60fps	Network: 2560x1920 (5MP)@50fps, 2560x1440 (4MP)@50/60fps	Network: 2688x1520 (4MP)@50/60fps	Network: 2688x1520 (4MP)@25/30fps	Network: 1920x1080 (1080P)@50/60fps
Image Stabilization	EIS	EIS	EIS	EIS	EIS
Defog	Digital	Digital	Digital	Digital	Digital
Analytics	Perimeter Intrusion Detection Abnormal Behavior Detection Smart Tracking Human & Vehicle Detection and Classification Fire & Smoke Detection Smoking & Calling Detection	Perimeter Intrusion Detection Abnormal Behavior Detection Smart Tracking Human & Vehicle Detection and Classification Fire & Smoke Detection Smoking & Calling Detection	Perimeter Intrusion Detection Abnormal Behavior Detection Smart Tracking Human & Vehicle Detection and Classification Fire & Smoke Detection Smoking & Calling Detection	Perimeter Intrusion Detection Abnormal Behavior Detection Smart Tracking	Perimeter Intrusion Detection Abnormal Behavior Detection Smart Tracking Human & Vehicle Detection and Classification Fire & Smoke Detection Smoking & Calling Detection
Video Output	10/100M Ethernet	10/100M Ethernet	10/100M Ethernet	10/100M Ethernet	10/100M Ethernet
Thermal Image Input	BT601/USB	BT601/USB	USB	-	USB
Audio	1 Line In / 1 Line Out	1 Line In / 1 Line Out	1 Line In / 1 Line Out	1 Line In / 1 Line Out	1 Line In / 1 Line Out
Serial Communication	TTL x 2 (VISCA & Pelco)	TTL x 2 (VISCA & Pelco)	TTL x 2 (VISCA & Pelco)	TTL x 2 (VISCA & Pelco)	TTL x 2 (VISCA & Pelco)
Edge Storage	Built-in EMMC 50GB	Expanding Micro SD/SDHC/SDXC slot, up to 1TB	Micro SD/SDHC/SDXC slot, up to 1TB	Micro SD/SDHC/SDXC slot, up to 1TB	Micro SD/SDHC/SDXC slot, up to 1TB
Power	9V - 12VDC: Typical 3.2W, Max 4.8W	9V - 12VDC: Typical 3.2W, Max 4.8W	9V - 12VDC: Typical 2.6W, Max 4.3W	9V - 12VDC: Typical 2.6W, Max 4.3W	9V - 12VDC: Typical 2.5W, Max 4.5W
Dimensions(LxWxH)	96.3 x 52 x 58.6mm	96.3 x 52 x 58.6mm	96.3 x 52 x 58.6mm	96.3 x 52 x 58.6mm	96.3 x 52 x 58.6mm
Weight	300g	300g	266g	266g	300g
DORI Distance(M)*	3360 / 1333 / 672 / 336	3000 / 1190 / 600 / 300	2566 / 1018 / 513 / 256	2566 / 1018 / 513 / 256	1945 / 772 / 389 / 194
Special Features	AI-ISP, ColorView	AI-ISP, ColorView	NDAA, High FPS	NDAA	NDAA

Zoom Camera Module

Thermal Module

SWIR Camera Module

Drone Gimbal Camera

Accessory

SCZ-100 Series



VS-SCZ2030KM



VS-SCZ2020NJM-G

SCZ-C Series



VS-SCZ8010KI



VS-SCZ2010YIE



VS-SCZ8003K

Image Sensor	1/2.8" 2MP CMOS STARVIS	1/1.7" 2MP CMOS	Image Sensor	1/2.8" 8MP CMOS STARVIS	1/2.8" 2MP CMOS STARVIS 2	1/2.3" 12MP CMOS
Focal Length	4.7 - 141mm, 30x Optical	6.5 - 130mm, 20x Optical	Focal Length	4.8 - 48mm, 10x Optical	4.8 - 48mm, 10x Optical	3.85 - 13.4mm, 3.5x Optical
Max. Aperture	F1.5 - F4.0	F1.5 - F4.0	Max. Aperture	F1.7 - F3.2	F1.7 - F3.2	F2.4 - F5.0
Angle of View	HFoV: 61.2° - 2.2° VFoV: 36.8° - 1.2°	HFoV: 61.1° - 3.4° VFoV: 36.7° - 1.9°	Angle of View	HFoV: 60.2° - 6.6° VFoV: 36.1° - 3.7°	HFoV: 60.2° - 6.6° VFoV: 36.1° - 3.7°	HFoV: 77.6° - 25.9°(12MP) HFoV: 75.4° - 24.9°(4K)
Min. Illumination	Color: 0.005Lux/F1.5	Color: 0.001Lux/F1.5	Min. Illumination	Color: 0.1Lux/F1.7	Color: 0.001Lux/F1.7	Color: 0.5Lux/F2.4
Max. Resolution / Frame Rate	Network: 1920x1080 (1080P)@25/30fps LVDS: 1920x1080 (1080P)@25/30fps	Network: 1920x1080 (1080P)@50/60fps	Max. Resolution / Frame Rate	Network: 3840x2160 (4K)@25/30fps	Network: 1920x1080 (1080P)@50/60fps	Network: 3840x2160 (4K)@25/30fps 4000x3000 (12MP) / 10fps
Image Stabilization	EIS	EIS	Image Stabilization	EIS	EIS	EIS
Defog	Digital	Digital	Defog	Digital	Digital	Digital
Analytics	Perimeter Intrusion Detection Abnormal Behavior Detection Smart Tracking	Perimeter Intrusion Detection Abnormal Behavior Detection Smart Tracking Human & Vehicle Detection and Classification Fire & Smoke Detection Smoking & Calling Detection	Analytics	Perimeter Intrusion Detection Abnormal Behavior Detection Smart Tracking Human & Vehicle Detection and Classification Fire & Smoke Detection Smoking & Calling Detection	Perimeter Intrusion Detection Abnormal Behavior Detection Smart Tracking Human & Vehicle Detection and Classification Fire & Smoke Detection Smoking & Calling Detection	Perimeter Intrusion Detection Abnormal Behavior Detection Smart Tracking
Video Output	10/100M Ethernet, LVDS	10/100M Ethernet, LVDS	Video Output	10/100M Ethernet	10/100M Ethernet	10/100M Ethernet
Thermal Image Input	-	USB	Thermal Image Input	BT601/USB	BT601/USB	BT601/USB
Audio	1 Line In / 1 Line Out	1 Line In / 1 Line Out	Audio	1 Line In / 1 Line Out	1 Line In / 1 Line Out	1 Line In / 1 Line Out
Serial Communication	TTL x 2 (VISCA & Pelco)	TTL x 2 (VISCA & Pelco)	Serial Communication	TTL x 2 (VISCA & Pelco)	TTL x 2 (VISCA & Pelco)	TTL x 2 (VISCA & Pelco)
Edge Storage	Micro SD/SDHC/SDXC slot, up to 1TB	Micro SD/SDHC/SDXC slot, up to 1TB	Edge Storage	Expanding Micro SD/SDHC/SDXC slot, up to 1TB	Micro SD/SDHC/SDXC slot, up to 1TB	Micro SD/SDHC/SDXC slot, up to 256G
Power	9V - 12VDC: Typical 2.5W, Max 4.5W	9V - 12VDC: Typical 4.5W, Max 5.5W	Power	9V - 12VDC: Typical 3.7W, Max 5.6W	9V - 12VDC: Typical 3.7W, Max 5.6W	9V - 12VDC: Typical 3.5W, Max 4.5W
Dimensions(LxWxH)	96.3 x 52 x 58.6mm	97 x 52 x 60mm	Dimensions(LxWxH)	65 x 45 x 52mm	65 x 45 x 52mm	55 x 30 x 40mm
Weight	300g	325g	Weight	152g	152g	55g
DORI Distance(M)*	2069 / 821 / 414 / 207	1300 / 516 / 260 / 130	DORI Distance(M)*	1324 / 525 / 265 / 132	662 / 263 / 132 / 66	346 / 137 / 69/35
Special Features	NDAA	Global Shutter	Special Features	4K, NDAA	AI-ISP, ColorView	4K, NDAA, Zero Distortion

UAZ Series



VS-UAZ8020KI






VS-UAZ2030NA



VS-UAZ8010KI



VS-UAZ8003K

Image Sensor	1/1.8" 8MP CMOS 	1/2.8" 2MP CMOS 	1/2.8" 8MP CMOS 	1/2.3" 12MP CMOS
Focal Length	6.5 - 130mm, 20x Optical	4.7 - 141mm, 30x Optical	4.8 - 48mm, 10x Optical	3.85 - 13.4mm, 3.5x Optical
Max. Aperture	F1.5 - F4.0	F1.5 - F4.0	F1.7 - F3.2	F2.4- F5.0
Angle of View	HFoV: 61.1° - 3.4° VFoV: 36.7° - 1.9°	HFoV: 61.2° - 2.2° VFoV: 36.8° - 1.2°	HFoV: 60.2° - 6.6° VFoV: 36.1° - 3.7°	HFoV: 77.6° - 25.9°(12MP) HFoV: 75.4° - 24.9°(4K)
Min. Illumination	Color: 0.01Lux/F1.5	Color: 0.005Lux/F1.5	Color: 0.1Lux/F1.7	Color: 0.5Lux/F2.4
Max. Resolution / Frame Rate	Network: 3840x2160 (4K)@25/30fps	Network: 1920x1080 (1080P)@50/60fps LVDS: 1920x1080 (1080P)@25/30fps	Network: 3840x2160 (4K)@25/30fps	Network: 3840x2160 (4K)@25/30fps 4000x3000 (12MP) / 10fps
Image Stabilization	EIS	EIS	EIS	EIS
Defog	Digital	Digital	Digital	Digital
Analytics	Perimeter Intrusion Detection Smart Tracking Human & Vehicle Detection and Classification Fire & Smoke Detection Smoking & Calling Detection	Perimeter Intrusion Detection Smart Tracking	Perimeter Intrusion Detection Smart Tracking Human & Vehicle Detection and Classification Fire & Smoke Detection Smoking & Calling Detection	Perimeter Intrusion Detection Smart Tracking
Video Output	10/100M Ethernet	10/100M Ethernet, LVDS	10/100M Ethernet	10/100M Ethernet
Thermal Image Input	BT601/USB	BT601/USB	BT601/USB	BT601/USB
Audio	1 Line In / 1 Line Out	1 Line In / 1 Line Out	1 Line In / 1 Line Out	1 Line In / 1 Line Out
Serial Communication	TTL x 2 (VISCA & Pelco)	TTL x 2 (VISCA & Pelco)	TTL x 2 (VISCA & Pelco)	TTL x 2 (VISCA & Pelco)
Edge Storage	Micro SD/SDHC/SDXC slot, up to 1TB	Micro SD/SDHC/SDXC slot, up to 1TB	Expanding Micro SD/SDHC/SDXC slot, up to 1TB	Micro SD/SDHC/SDXC slot, up to 256G
Power	9V - 12VDC: Typical 4.5W, Max 5.5W	9V - 12VDC: Typical 2.5W, Max 4.5W	9V - 12VDC: Typical 3.7W, Max 5.6W	9V - 12VDC: Typical 3.5W, Max 4.5W
Dimensions(LxWxH)	97.2 x 52.2 x 60.3mm	95 x 48.3 x54.15mm	65 x 45 x 52mm	55 x 30 x 40mm
Weight	330g	154g	152g	55g
DORI Distance(M)*	2600 / 1032 / 520 / 260	1945 / 722 / 389 / 194	1324 / 525 / 265 / 132	346 /137 / 69/ 35
Special Features	4K, NDAA	/	4K, NDAA	4K, NDAA, Zero Distortion

*The DORI standard (based on the IEC EN62676-4:2015 international standard) defines different levels of detail for detection (25PPM), observation (62PPM), recognition (125PPM), and Identification (250PPM). This table is for reference only and performance may vary depending on the environment.

Thermal Module

Unleash the Power of Thermal Imaging with Our Comprehensive Module

VISHEEN's thermal module series offers a wide range of uncooled Long-Wave Infrared (LWIR) and cooled Mid-Wave Infrared (MWIR) imaging solutions. Designed to meet the most demanding applications, our modules deliver exceptional performance, reliability, and versatility.

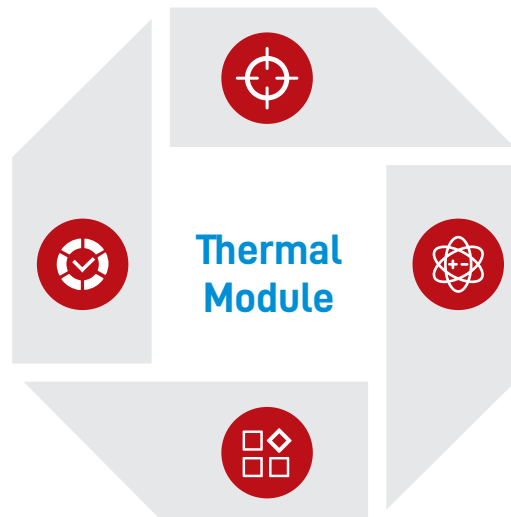


Industry-leading zoom capabilities:

Our modules feature the longest zoom ranges in the industry, with up to 350mm for LWIR and 900mm for MWIR, enabling you to capture distant targets with unparalleled clarity and detail.

Robust performance:

Our modules are designed to operate in harsh environments and withstand extreme temperatures.



Customizable configurations:

Choose from a variety of focal lengths, resolutions, and interfaces to meet your specific application requirements.

Highly integrated design:

Ideal and easier for integration into any security camera system.

Uncooled LWIR



VS-SCMA3507NR2-D



VS-SCMA2259NR2-D



VS-SCMA1505NR2-D



VS-SCM62259NRS-D



VS-SCM61505NRS-D

Image Sensor	Uncooled VOx Microbolometer, 1280x1024	Uncooled VOx Microbolometer, 1280x1024	Uncooled VOx Microbolometer, 1280x1024	Uncooled VOx Microbolometer, 640x512	Uncooled VOx Microbolometer, 640x512
Pixel Pitch	12μm	12μm	12μm	12μm	12μm
Spectral Band	8 - 14μm	8 - 14μm	8 - 14μm	8 - 14μm	8 - 14μm
Sensitivity	NETD≤50mK	NETD≤50mK	NETD≤50mK	NETD≤50mK	NETD≤50mK
Lens	50 - 350mm, 7x Continuous zoom, F1.4	25 - 225mm, 9x Continuous zoom, F1.0-F1.5	30 - 150mm, 5x Continuous zoom, F1.0-F1.2	25 - 225mm, 9x Continuous zoom, F1.0-F1.5	30 - 150mm, 5x Continuous zoom, F0.9-F1.2
Angle of View	HFoV: 17.46° - 2.51° VFoV: 14.01° - 2.01°	HFoV: 34.15° - 3.91° VFoV: 27.61° - 3.13°	HFoV: 28.72° - 5.86° VFoV: 23.15° - 4.69°	HFoV: 17.46° - 1.96° VFoV: 14.01° - 1.56°	HFoV: 14.59° - 2.51° VFoV: 11.69° - 2.01°
Max. Resolution / Frame Rate	Network/USB: 1280x1024 (SXGA)@25fps BT1120: 1920x1080 (1080P)@25fps	Network/USB: 1280x1024 (SXGA)@25fps BT1120: 1920x1080 (1080P)@25fps	Network/USB: 1280x1024 (SXGA)@25fps BT1120: 1920x1080 (1080P)@25fps	Network/USB: 1280x1024 (SXGA)@25fps BT1120: 1920x1080 (1080P)@25fps CVBS: 720x576/720x480 (D1)@25/30fps	Network/USB: 1280x1024 (SXGA)@25fps BT1120: 1920x1080 (1080P)@25fps CVBS: 720x576/720x480 (D1)@25/30fps
Digital Zoom	4x	4x	4x	8x	8x
Image Stabilization	EIS	EIS	EIS	-	-
Analytics	Perimeter Intrusion Detection	Perimeter Intrusion Detection	Perimeter Intrusion Detection	Perimeter Intrusion Detection	Perimeter Intrusion Detection
Video Output	10/100M Ethernet, USB, BT1120	10/100M Ethernet, USB, BT1120	10/100M Ethernet, USB, BT1120	10/100M Ethernet, USB, BT1120, CVBS	10/100M Ethernet, USB, BT1120, CVBS
Audio	1 Line In / 1 Line Out	1 Line In / 1 Line Out	1 Line In / 1 Line Out	1 Line In / 1 Line Out	1 Line In / 1 Line Out
Alarm	1 In / 1 Out	1 In / 1 Out	1 In / 1 Out	1 In / 1 Out	1 In / 1 Out
Serial Communication	TTL x 2 (VISCA & Pelco)	RS485; Compatible with Pelco	RS485; Compatible with Pelco	RS485; Compatible with Pelco	RS485; Compatible with Pelco
Edge Storage	Micro SD/SDHC/SDXC slot, up to 1TB	Micro SD/SDHC/SDXC slot, up to 1TB	Micro SD/SDHC/SDXC slot, up to 1TB	Micro SD/SDHC/SDXC slot, up to 1TB	Micro SD/SDHC/SDXC slot, up to 1TB
Power	9V - 12VDC: Typical 4.0W, Max 8.4W	9V - 12VDC: Typical 4.5W, Max 5.5W	9V - 12VDC: Typical 4.5W, Max 5.5W	9V - 12VDC: Typical 4.5W, Max 5.5W	9V - 12VDC: Typical 4.5W, Max 5.5W
Dimensions(LxWxH)	Ø300mm×430mm	Ø190mm×320mm	Ø187mm×282mm	Ø190mm×325mm	Ø190mm×265mm
Weight	17kg(Including bracket)	4.7kg	3.4kg	3.7Kg	3.4Kg
DRI Distance(M)*	Human: 14583 / 3646 / 1823 Vehicle: 44722 / 11181 / 5590	Human: 9375 / 2344 / 1172 Vehicle: 28750 / 7188 / 3954	Human: 6250 / 1563 / 781 Vehicle: 19167 / 4792 / 2396	Human: 9375 / 2344 / 1172 Vehicle: 28750 / 7188 / 3954	Human: 6250 / 1563 / 781 Vehicle: 19167 / 4792 / 2396
Special Features	HD Thermal detector, 350mm motorized zoom	HD Thermal detector, motorized zoom	HD Thermal detector, motorized zoom	VGA Thermal detector, motorized zoom	VGA Thermal detector, motorized zoom

Zoom Camera Module

Thermal Module

SWIR Camera Module

Drone Gimbal Camer

Accessory

Uncooled LWIR



VS-SCM60753NRS-D



VS-SCM6055NRS



VS-SCM6035NRS



VS-SCM6025NRS



VS-SCM6019NRS

Image Sensor	Uncooled VOx Microbolometer, 640x512	Uncooled VOx Microbolometer, 640x512	Uncooled VOx Microbolometer, 640x512	Uncooled VOx Microbolometer, 640x512	Uncooled VOx Microbolometer, 640x512
Pixel Pitch	12μm	12μm	12μm	12μm	12μm
Spectral Band	8 - 14μm	8 - 14μm	8 - 14μm	8 - 14μm	8 - 14μm
Sensitivity	NETD≤50mK	NETD≤50mK	NETD≤50mK	NETD≤50mK	NETD≤50mK
Lens	25 - 75mm, 3x Continuous zoom, F1.0-F1.2	Athermalized 55mm, F1.0	Athermalized 35mm, F1.0	Athermalized 25mm, F1.0	Athermalized 19mm, F1.0
Angle of View	HFoV: 17.46° - 5.86° VFoV: 14.1° - 4.69°	8.0° x 6.4°	12.5° x 10°	17.4° x 14°	22.9° x 18.4°
Max. Resolution / Frame Rate	Network/USB: 1280x1024 (SXGA)@25fps BT1120: 1920x1080 (1080P)@25fps CVBS: 720x576/720x480 (D1)@25/30fps	Network/USB: 1280x1024 (SXGA)@25fps BT1120: 1920x1080 (1080P)@25fps CVBS: 720x576/720x480 (D1)@25/30fps	Network/USB: 1280x1024 (SXGA)@25fps BT1120: 1920x1080 (1080P)@25fps CVBS: 720x576/720x480 (D1)@25/30fps	Network/USB: 1280x1024 (SXGA)@25fps BT1120: 1920x1080 (1080P)@25fps CVBS: 720x576/720x480 (D1)@25/30fps	Network/USB: 1280x1024 (SXGA)@25fps BT1120: 1920x1080 (1080P)@25fps CVBS: 720x576/720x480 (D1)@25/30fps
Digital Zoom	8x	8x	8x	8x	8x
Image Stabilization	-	-	-	-	-
Analytics	Perimeter Intrusion Detection	Perimeter Intrusion Detection	Perimeter Intrusion Detection	Perimeter Intrusion Detection	Perimeter Intrusion Detection
Video Output	10/100M Ethernet, USB, BT1120, CVBS	10/100M Ethernet, USB, BT1120, CVBS	10/100M Ethernet, USB, BT1120, CVBS	10/100M Ethernet, USB, BT1120, CVBS	10/100M Ethernet, USB, BT1120, CVBS
Audio	1 Line In / 1 Line Out	1 Line In / 1 Line Out	1 Line In / 1 Line Out	1 Line In / 1 Line Out	1 Line In / 1 Line Out
Alarm	1 In / 1 Out	1 In / 1 Out	1 In / 1 Out	1 In / 1 Out	1 In / 1 Out
Serial Communication	RS485; Compatible with Pelco	RS485; Compatible with Pelco	RS485; Compatible with Pelco	RS485; Compatible with Pelco	RS485; Compatible with Pelco
Edge Storage	Micro SD/SDHC/SDXC slot, up to 1TB	Micro SD/SDHC/SDXC slot, up to 1TB	Micro SD/SDHC/SDXC slot, up to 1TB	Micro SD/SDHC/SDXC slot, up to 1TB	Micro SD/SDHC/SDXC slot, up to 1TB
Power	9V - 12VDC: 4W	9V - 12VDC: 4W	9V - 12VDC: 4W	9V - 12VDC: 4W	9V - 12VDC: 4W
Dimensions(LxWxH)	Ø88mm×175mm	Ø65mm×107mm	90×48×47mm	76×48×47mm	70×48×47mm
Weight	1.2Kg	215g	129g	66g	52g
DRI Distance(M)*	Human: 3125 / 781 / 391 Vehicle: 9583 / 2396 / 1198	Human: 2292 / 573 / 286 Vehicle: 7028 / 1757 / 878	Human: 1458 / 365 / 182 Vehicle: 4472 / 1118 / 559	Human: 1042 / 260 / 130 Vehicle: 3194 / 799 / 399	Human: 792 / 198 / 99 Vehicle: 2438 / 607 / 303
Special Features	VGA Thermal detector, motorized zoom	VGA Thermal detector, althermalized lens	VGA Thermal detector, althermalized lens	VGA Thermal detector, althermalized lens	VGA Thermal detector, althermalized lens

Uncooled LWIR			Cooled MWIR	
<div> VS-SCM6013NRS</div> <div> VS-SCM6009NRS</div>			<div> VS-MIM6900ANPF-D</div> <div> VS-MIM6300FNPF-D</div>	
Image Sensor	Uncooled VOx Microbolometer, 640x512	Uncooled VOx Microbolometer, 640x512	Cooled HgCdTe, 640x512	Cooled HgCdTe, 640x512
Pixel Pitch	12μm	12μm	15μm	15μm
Spectral Band	8 - 14μm	8 - 14μm	3.7 - 4.8μm	3.7 - 4.8μm
Sensitivity	NETD≤50mK	NETD≤50mK	NETD≤25mK	NETD≤25mK
Lens	Athermalized 13mm, F1.0	Athermalized 9.1mm, F1.0	90 - 900mm, 10x Continuous zoom, F4.0	20 - 300mm, 15x Continuous zoom, F4.0
Angle of View	32.9° x 26.6°	48.6° x 38.6°	HFoV: 6.11° - 0.61° VFoV: 4.89° - 0.49°	HFoV: 26.99° - 1.83° VFoV: 21.74° - 1.47°
Max. Resolution / Frame Rate	Network/USB: 1280x1024 (SXGA)@25fps BT1120: 1920x1080 (1080P)@25fps CVBS: 720x576/720x480 (D1)@25/30fps	Network/USB: 1280x1024 (SXGA)@25fps BT1120: 1920x1080 (1080P)@25fps CVBS: 720x576/720x480 (D1)@25/30fps	Network: 1280x1024 (SXGA)@50/60fps	Network: 1280x1024 (SXGA)@50/60fps
Digital Zoom	8x	8x	8x	8x
Image Stabilization	-	-	EIS	EIS
Analytics	Perimeter Intrusion Detection	Perimeter Intrusion Detection	Perimeter Intrusion Detection	Perimeter Intrusion Detection
Video Output	10/100M Ethernet, USB, BT1120, CVBS	10/100M Ethernet, USB, BT1120, CVBS	10/100M Ethernet	10/100M Ethernet
Audio	1 Line In / 1 Line Out	1 Line In / 1 Line Out	1 Line In / 1 Line Out	1 Line In / 1 Line Out
Alarm	1 In / 1 Out	1 In / 1 Out	-	-
Serial Communication	RS485; Compatible with Pelco	RS485; Compatible with Pelco	TTL x 2 (VISCA & Pelco)	TTL x 2 (VISCA & Pelco)
Edge Storage	Micro SD/SDHC/SDXC slot, up to 1TB	Micro SD/SDHC/SDXC slot, up to 1TB	Micro SD/SDHC/SDXC slot, up to 1TB	Micro SD/SDHC/SDXC slot, up to 1TB
Power	9V - 12VDC: 4W	9V - 12VDC: 4W	Refrigeration pump: 24VDC±10% Camera: 9V - 12VDC Typical 20W, Max 65W(Refrigeration pump cooling)	Refrigeration pump: 24VDC±10% Camera: 9V - 12VDC Typical 20W, Max 65W(Refrigeration pump cooling)
Dimensions(LxWxH)	63×48×47mm	65×48×47mm	635 x 280 x 290mm	355 x 190 x 190mm
Weight	35g	35g	25kg	8.5kg
DRI Distance(M)*	Human: 542 / 135 / 68 Vehicle: 1661 / 415 / 208	Human: 379 / 95 / 47 Vehicle: 2528 / 632 / 316	Human: 30000 / 7500 / 3750 Vehicle: 92000 / 23000 / 11500	Human: 10000 / 2500 / 1250 Vehicle: 30667 / 7667 / 3833
Special Features	VGA Thermal detector, athermalized lens	VGA Thermal detector, athermalized lens	Cooling time: ≤7min @25°C Refrigeration pump life: 20000 hours	Cooling time: ≤7min @25°C Refrigeration pump life: 20000 hours

EO/IR



VS-SCZ5035YCE-RV6-55



VS-SCZ5035YCE-RV6-35



VS-SCZ5035YCE-RV6-25

	Thermal	Visible	Thermal	Visible	Thermal	Visible
Image Sensor	Uncooled VOx Microbolometer 640x512, Pixel Pitch: 12μm 8 - 14μm, NETD≤50mK	1/2.8" 5MP CMOS STARVIS 2	Uncooled VOx Microbolometer 640x512, Pixel Pitch: 12μm 8 - 14μm, NETD≤50mK	1/2.8" 5MP CMOS STARVIS 2	Uncooled VOx Microbolometer 640x512, Pixel Pitch: 12μm 8 - 14μm, NETD≤50mK	1/2.8" 5MP CMOS STARVIS 2
Lens	55mm, F1.0, 4x Digital Zoom	4.8 - 168mm, 35x Optical F1.6 - F4.4	35mm, F1.0, 4x Digital Zoom	4.8 - 168mm, 35x Optical F1.6 - F4.4	25mm, F1.0, 4x Digital Zoom	4.8 - 168mm, 35x Optical F1.6 - F4.4
Angle of View	8°×6.4°	HFoV: 56.1° - 1.75° VFoV: 43.6° - 1.31°	12.5°×10°	HFoV: 56.1° - 1.75° VFoV: 43.6° - 1.31°	17°×14°	HFoV: 56.1° - 1.75° VFoV: 43.6° - 1.31°
Min. Illumination	-	Color: 0.001Lux/F1.6	-	Color: 0.001Lux/F1.6	-	Color: 0.001Lux/F1.6
Max. Resolution / Frame Rate	Network: 1280x1024 (SXGA)@25fps	Network: 2560x1920 (5MP)@50fps, 2560x1440 (4MP)@50/60fps"	Network: 1280x1024 (SXGA)@25fps	Network: 2560x1920 (5MP)@50fps, 2560x1440 (4MP)@50/60fps	Network: 1280x1024 (SXGA)@25fps	Network: 2560x1920 (5MP)@50fps, 2560x1440 (4MP)@50/60fps
Image Stabilization	EIS	EIS	EIS	EIS	EIS	EIS
Analytics	Perimeter Intrusion Detection	Perimeter Intrusion Detection Abnormal Behavior Detection Smart Tracking Human & Vehicle Detection and Classification Fire & Smoke Detection Smoking & Calling Detection	Perimeter Intrusion Detection	Perimeter Intrusion Detection Abnormal Behavior Detection Smart Tracking Human & Vehicle Detection and Classification Fire & Smoke Detection Smoking & Calling Detection	Perimeter Intrusion Detection	Perimeter Intrusion Detection Abnormal Behavior Detection Smart Tracking Human & Vehicle Detection and Classification Fire & Smoke Detection Smoking & Calling Detection
Video Output	BT601(Connecting to visible camera)	10/100M Ethernet	BT601(Connecting to visible camera)	10/100M Ethernet	BT601(Connecting to visible camera)	10/100M Ethernet
Audio	-	1 Line In / 1 Line Out	-	1 Line In / 1 Line Out	-	1 Line In / 1 Line Out
Serial Communication	-	TTL x 2 (VISCA & Pelco)	-	TTL x 2 (VISCA & Pelco)	-	TTL x 2 (VISCA & Pelco)
Edge Storage	-	Built-in EMMC 50GB	-	Built-in EMMC 50GB	-	Built-in EMMC 50GB
Power	9V - 12VDC: Typical 3.9W, Max 5.5W		9V - 12VDC: Typical 3.9W, Max 5.5W		9V - 12VDC: Typical 3.9W, Max 5.5W	
Dimensions(LxWxH)	Ø65mm x 78.5mm	96.3 x 52 x 58.6mm	Ø47mm x 61mm	96.3 x 52 x 58.6mm	Ø37mm x 47mm	96.3 x 52 x 58.6mm
Weight	210g	300g	127g	300g	64g	300g
DRI/DORI Distance(M)*	Human: 2292 / 573 / 286 Vehicle: 7028 / 1757 / 878	3360 / 1333 / 672 / 336	Human: 1458 / 365 / 182 Vehicle: 4472 / 1118 / 559	3360 / 1333 / 672 / 336	Human: 1042 / 260 / 130 Vehicle: 3194 / 799 / 399	3360 / 1333 / 672 / 336
Special Features	Temperature measurement model(RT6) optional Accuracy: ±3°C , ±3% Range: -20°C to+150°C , +100°C to +550°C	VS-SCZ8020KI/VS-SCZ8010KI/ VS-SCZ8003K and other models support BT601 are optional	Temperature measurement model(RT6) optional Accuracy: ±3°C , ±3% Range: -20°C to+150°C , +100°C to +550°C	VS-SCZ8020KI/VS-SCZ8010KI/ VS-SCZ8003K and other models support BT601 are optional	Temperature measurement model(RT6) optional Accuracy: ±3°C , ±3% Range: -20°C to+150°C , +100°C to +550°C	VS-SCZ8020KI/VS-SCZ8010KI/ VS-SCZ8003K and other models support BT601 are optional

EO/IR



VS-SCZ5035YCE-RV6-19



VS-SCZ5035YCE-RV6-13



VS-SCZ5035YCE-RV6-9

	Thermal	Visible	Thermal	Visible	Thermal	Visible
Image Sensor	Uncooled VOx Microbolometer 640x512, Pixel Pitch: 12μm 8 - 14μm, NETD≤50mK	1/2.8" 5MP CMOS STARVIS 2	Uncooled VOx Microbolometer 640x512, Pixel Pitch: 12μm 8 - 14μm, NETD≤50mK	1/2.8" 5MP CMOS STARVIS 2	Uncooled VOx Microbolometer 640x512, Pixel Pitch: 12μm 8 - 14μm, NETD≤50mK	1/2.8" 5MP CMOS STARVIS 2
Lens	19mm, F1.0, 4x Digital Zoom	4.8 - 168mm, 35x Optical F1.6 - F4.4	13mm, F1.2, 4x Digital Zoom	4.8 - 168mm, 35x Optical F1.6 - F4.4	9.1mm, F1.0, 4x Digital Zoom	4.8 - 168mm, 35x Optical F1.6 - F4.4
Angle of View	22°×18°	HFoV: 56.1° - 1.75° VFoV: 43.6° - 1.31°	33°×26°	HFoV: 56.1° - 1.75° VFoV: 43.6° - 1.31°	48°×38°	HFoV: 56.1° - 1.75° VFoV: 43.6° - 1.31°
Min. Illumination	-	Color: 0.001Lux/F1.6	-	Color: 0.001Lux/F1.6	-	Color: 0.001Lux/F1.6
Max. Resolution / Frame Rate	Network: 1280x1024 (SXGA)@25fps	Network: 2560x1920 (5MP)@50fps, 2560x1440 (4MP)@50/60fps	Network: 1280x1024 (SXGA)@25fps	Network: 2560x1920 (5MP)@50fps, 2560x1440 (4MP)@50/60fps	Network: 1280x1024 (SXGA)@25fps	Network: 2560x1920 (5MP)@50fps, 2560x1440 (4MP)@50/60fps
Image Stabilization	EIS	EIS	EIS	EIS	EIS	EIS
Analytics	Perimeter Intrusion Detection	Perimeter Intrusion Detection Abnormal Behavior Detection Smart Tracking Human & Vehicle Detection and Classification Fire & Smoke Detection Smoking & Calling Detection	Perimeter Intrusion Detection	Perimeter Intrusion Detection Abnormal Behavior Detection Smart Tracking Human & Vehicle Detection and Classification Fire & Smoke Detection Smoking & Calling Detection	Perimeter Intrusion Detection	Perimeter Intrusion Detection Abnormal Behavior Detection Smart Tracking Human & Vehicle Detection and Classification Fire & Smoke Detection Smoking & Calling Detection
Video Output	BT601(Connecting to visible camera)	10/100M Ethernet	BT601(Connecting to visible camera)	10/100M Ethernet	BT601(Connecting to visible camera)	10/100M Ethernet
Audio	-	1 Line In / 1 Line Out	-	1 Line In / 1 Line Out	-	1 Line In / 1 Line Out
Serial Communication	-	TTL x 2 (VISCA & Pelco)	-	TTL x 2 (VISCA & Pelco)	-	TTL x 2 (VISCA & Pelco)
Edge Storage	-	Built-in EMMC 50GB	-	Built-in EMMC 50GB	-	Built-in EMMC 50GB
Power	9V - 12VDC: Typical 3.9W, Max 5.5W		9V - 12VDC: Typical 3.9W, Max 5.5W		9V - 12VDC: Typical 3.9W, Max 5.5W	
Dimensions(LxWxH)	Ø30 x 40.5mm	96.3 x 52 x 58.6mm	35.7 x 26 x 26mm	96.3 x 52 x 58.6mm	35.7 x 26 x 26mm	96.3 x 52 x 58.6mm
Weight	50g	300g	33g	300g	33g	300g
DRI/DORI Distance(M)*	Human: 792 / 198 / 99 Vehicle: 2438 / 607 / 303	3360 / 1333 / 672 / 336	Human: 542 / 135 / 68 Vehicle: 1661 / 415 / 208	3360 / 1333 / 672 / 336	Human: 379 / 95 / 47 Vehicle: 2528 / 632 / 316	3360 / 1333 / 672 / 336
Special Features	Temperature measurement model(RT6) optional Accuracy: ±3°C, ±3% Range: -20°C to +150°C, +100°C to +550°C	VS-SCZ8020KI/VS-SCZ8010KI/ VS-SCZ8003K and other models support BT601 are optional	Temperature measurement model(RT6) optional Accuracy: ±3°C, ±3% Range: -20°C to +150°C, +100°C to +550°C	VS-SCZ8020KI/VS-SCZ8010KI/ VS-SCZ8003K and other models support BT601 are optional	Temperature measurement model(RT6) optional Accuracy: ±3°C, ±3% Range: -20°C to +150°C, +100°C to +550°C	VS-SCZ8020KI/VS-SCZ8010KI/ VS-SCZ8003K and other models support BT601 are optional

*The DRI distances are calculated according to Johnson criteria: detection(15 or more pixels), recognition(6 or more pixels), identification(12 or more pixels). This table is for reference only and performance may vary depending on the environment.

SWIR Camera Module

Harness the power of SWIR (short-wave infrared) technology to transcend the limitations of traditional surveillance with SWIR series. Our cutting-edge SWIR cameras provide unparalleled visibility through challenging conditions, such as fog, haze, and smoke, enabling you to safeguard your world with unprecedented clarity and insight.



SWIR: Seeing Beyond the Visible

Penetrate Obscurity

See through fog, haze, and smoke with exceptional clarity.

Detect Hidden Objects

Reveal objects obscured by vegetation or other materials.

Discern Material Composition

Identify objects based on their unique spectral signatures.

Elevate Your Surveillance Capabilities

Enhanced Perimeter Security

Protect vast areas even in adverse weather conditions.

Critical Infrastructure Monitoring

Safeguard sensitive assets from hidden threats.

Forensic Investigations

Uncover crucial evidence in challenging environments.

SWIR Camera Module



VS-MIZA030NIB



VS-MIZ6030NIB



VS-MIYA012N



VS-MIY6025N

Sensor Type	1/2" InGaAs, 1280x1024 	1/4" InGaAs, 640x512 	1/2" InGaAs, 1280x1024 	1/4" InGaAs, 640x512 
Pixel Pitch	5μm	5μm	5μm	5μm
Spectral Band	400 - 1700nm	400 - 1700nm	400 - 1700nm	400 - 1700nm
Focal Length	17 - 510mm, 30x Optical	17 - 510mm, 30x Optical	12mm	25mm
Max. Aperture	F2.9 - F6.6	F2.9 - F6.6	F1.4	F1.3
Angle of View	HFoV: 21.32° - 0.72° VFoV: 17.13° - 0.58°	HFoV: 10.75° - 0.36° VFoV: 8.61° - 0.29°	29.86°×24.09°	7.32°×5.86°
Max. Resolution / Frame Rate	Network: 1280x1024 (SXGA)@50/60fps LVDS: 1920x1080 (1080P)@50/60fps	Network: 1280x1024 (SXGA)@50/60fps LVDS: 1920x1080 (1080P)@50/60fps	Network: 1280x1024 (SXGA)@50/60fps LVDS: 1920x1080 (1080P)@50/60fps	Network: 1280x1024 (SXGA)@50/60fps LVDS: 1920x1080 (1080P)@50/60fps
Image Stabilization	EIS	EIS	EIS	EIS
Analytics	Perimeter Intrusion Detection	Perimeter Intrusion Detection	Perimeter Intrusion Detection	Perimeter Intrusion Detection
Video Output	10/100M Ethernet, LVDS	10/100M Ethernet, LVDS	10/100M Ethernet, LVDS	10/100M Ethernet, LVDS
Audio	1 Line In / 1 Line Out	1 Line In / 1 Line Out	-	-
Serial Communication	TTL x 2 (VISCA & Pelco)	TTL x 2 (VISCA & Pelco)	TTL x 2 (VISCA & Pelco)	TTL x 2 (VISCA & Pelco)
Edge Storage	Micro SD/SDHC/SDXC slot, up to 1TB	Micro SD/SDHC/SDXC slot, up to 1TB	Micro SD/SDHC/SDXC slot, up to 1TB	Micro SD/SDHC/SDXC slot, up to 1TB
Power	9V - 12VDC: Typical 4W, Max 9W	9V - 12VDC: Typical 4W, Max 9W	9V - 12VDC: Max 4.5W	9V - 12VDC: Max 4.5W
Dimensions(LxWxH)	320 x 109 x 109mm	320 x 109 x 109mm	"121.6 x 50 x 55mm 48 x 50 x 55mm(Without lens)"	"113.1 x 50 x 55mm 48 x 50 x 55mm(Without lens)"
Weight	3.2kg	3.2kg	400g	420g
DORI Distance(M)	4080 / 1619 / 816 / 408	4080 / 1619 / 816 / 408	96 / 38 / 19 / 10	200 / 79 / 40 / 20

Zoom Camera Module

Thermal Module

SWIR Camera Module

Drone Gimbal Camer

Accessory

Drone Gimbal Camera

Soar to new heights of aerial surveillance with UAV series, specifically designed to meet the demanding needs of drone applications. Our comprehensive range of camera modules and gimbal camera systems provide a multitude of optical combinations, including visible light, thermal imaging, and laser ranging, all packaged in a lightweight and highly integrated solution.



Tailored for Drone Applications:

Experience seamless integration with various drone platforms.

Multi-Sensor Fusion

Gain comprehensive situational awareness with visible, thermal, and laser data.

Lightweight and Compact Design

Minimize drone payload and maximize flight time.

01

Unparalleled
Versatility for Aerial
Intelligence

02

03

01

High-Resolution Imaging

Capture stunning visuals with exceptional clarity.

Advanced Thermal Imaging

Detect and track objects even in low-light or obscured conditions.

02

Precise Laser Ranging

Accurately measure distances and create 3D models.

03

Visible



VS-UAP8003K



VS-UAP8010K



VS-UAP2030

Image Sensor	1/2.3" 12MP CMOS	1/2.8" 8MP CMOS STARVIS	1/2.8" 2MP CMOS STARVIS
Focal Length	3.85 - 13.4mm	4.8 - 48mm	4.7 - 141mm
Optical Zoom	3.5x	10x	30x
Max. Aperture	F2.4- F5.0	F1.7 - F3.2	F1.5 - F4.0
Min. Illumination	Color: 0.5Lux/F2.4	Color: 0.01Lux/F1.7, B&W: 0.001Lux/F1.7	Color:0.001Lux/F1.5, B&W: 0.0001Lux/F1.5
Angle of View	HFoV: 77.6° - 25.9°(12MP) HFoV: 75.4° - 24.9°(4K)	HFoV: 60.2° - 6.6° VFoV: 36.1° - 3.7°	HFoV: 61.2° - 2.2° VFoV: 36.8° - 1.2°
Max. Resolution / Frame Rate	3840x2160 (4K)@25/30fps 4000x3000 (12MP)@10fps	3840x2160 (4K)@25/30fps	1920x1080 (1080P)@50/60fps
IVS	-	-	Human & Vehicle
Trace	support	support	support
Control Protocol	UDP	UDP	UDP
Angular Jitter	±0.01°	±0.01°	±0.01°
Controlled Rotation Range	Pitch: +70° to -100°, Heading: 360° continuous	Pitch: +70° to -90°, Heading: 360° continuous	Pitch: +70° to -90°, Heading: 360° continuous
Max. Control Speed	Pitch: 120°/s, Heading: 180°/s	Pitch: 120°/s, Heading: 180°/s	Pitch: 120°/s, Heading: 180°/s
Laser Range Finder	-	1200m	-
Communication Interface	WAN, CAN	WAN, CAN	Sbus, WAN, serial port, CAN
Interface Type	Quick disassembly interface	Quick disassembly interface	Quick disassembly interface
Storage	Micro SD/SDHC/SDXC slot, up to 1TB	Micro SD/SDHC/SDXC slot, up to 1TB	Micro SD/SDHC/SDXC slot, up to 1TB
Operational Temperature	-10°C to +60°C	-20°C to +60°C	-10°C to +60°C
Input Voltage	12V - 25V DC	12V - 25V DC	14V - 60V DC
Dimensions(LxWxH)	78.3 x 98.1 x 113.2mm	92 x 110.19 x 151.1mm	121 x 104 x 180mm
Weight	385g	470g	550g

EO/IR



VS-UAP8003K-RV3/RT3-19



VS-UAP2030NA-RV3/RT3-19



VS-UAP2030NA-RV6-25



VS-UAP2030-GV6025



VS-UAP2030-GV6019-L15



VS-UAP2010-GV6019-L15-P

Visible Sensor	1/2.3" 12MP CMOS	1/2.8" 2MP CMOS STARVIS	1/2.8" 2MP CMOS STARVIS	1/2.8" 2MP CMOS STARVIS	1/2.8" 2MP CMOS STARVIS	1/2.8" 2MP CMOS STARVIS
Visible Lens	3.85 - 13.4mm, 3.5x F2.4 - F5.0 HFOV: 75.4° - 24.9°	4.7 - 141mm, 30x F1.5 - F4.0 HFOV: 61.2° - 2.2	4.7 - 141mm, 30x F1.5 - F4.0 HFOV: 61.2° - 2.2	4.7 - 141mm, 30x F1.5 - F4.0 HFOV: 61.2° - 2.2	4.7 - 141mm, 30x F1.5 - F4.0 HFOV: 61.2° - 2.2	4.7 - 47mm, 10x F1.6 - F3.0 HFOV: 69.9° - 8.7°
Thermal Detector	12μm 384x288 VOx	12μm 384x288 VOx	12μm 640x512 VOx	12μm 640x512 VOx	12μm 640x512 VOx	12μm 640x512 VOx
Thermal Lens	19mm FoV: 13.83° x 10.39°	19mm FoV: 13.83° x 10.39°	25mm FoV: 17.46° x 14.01°	25mm FoV: 17.46° x 14.01°	19mm FoV: 22.85° x 18.37°	19mm FoV: 22.85° x 18.37°
Max. Resolution / Frame Rate	Visible: 3840x2160 (4K)@25/30fps Thermal: 704x576 (D1)@25/30fps	Visible: 3840x2160 (4K)@25/30fps Thermal: 704x576 (D1)@25/30fps	Visible: 1920x1080 (1080P)@25/30fps Thermal: 1280x1024 (SXGA)@25/30fps	Visible: 1920x1080 (1080P)@25/30fps Thermal: 1280x1024 (SXGA)@25/30fps	Visible: 1920x1080 (1080P)@25/30fps Thermal: 1280x1024 (SXGA)@25/30fps	Visible: 1920x1080 (1080P)@25/30fps Thermal: 1280x1024 (SXGA)@25/30fps
Thermometry	optional(-RT3 model)	optional(-RT3 model)	-	-	-	-
IVS	-	-	-	Human & Vehicle	Human & Vehicle	Human & Vehicle
Angular jitter	±0.01°	±0.01°	±0.01°	±0.01°	±0.01°	±0.01°
Controlled Rotation Range	Pitch: +70° to -90°, Heading: 360° continuous	Pitch: +70° to -90°, Heading: 360° continuous	Pitch: +70° to -90°, Heading: 360° continuous	Pitch: +90° to -45°, Heading: 360° continuous	Pitch: +90° to -45°, Heading: 360° continuous	Pitch: +90° to -45°, Heading: 360° continuous
Max. Control Speed	Pitch: 120°/s, Heading: 180°/s	Pitch: 120°/s, Heading: 180°/s	Pitch: 120°/s, Heading: 180°/s	Pitch: 120°/s, Heading: 180°/s	Pitch: 120°/s, Heading: 180°/s	Pitch: 120°/s, Heading: 180°/s
Laser Range Finder	-	-	-	-	1500m	1500m
Laser Indication	-	-	-	-	-	1000m
Communication Interface	LAN, CAN	LAN, CAN	LAN, CAN	Sbus, LAN, serial port, CAN	Sbus, LAN, serial port, CAN	Sbus, LAN, serial port, CAN
Interface Type	Quick disassembly interface	Quick disassembly interface	Quick disassembly interface	Quick disassembly interface	Quick disassembly interface	Quick disassembly interface
Storage	Micro SD/SDHC/SDXC slot, up to 1TB	Micro SD/SDHC/SDXC slot, up to 1TB	Micro SD/SDHC/SDXC slot, up to 1TB	Micro SD/SDHC/SDXC slot, up to 1TB	Micro SD/SDHC/SDXC slot, up to 1TB	Micro SD/SDHC/SDXC slot, up to 1TB
Operational Temperature	-10°C to +55°C	-20°C to +60°C	-20°C to +60°C	-20°C to +45°C	-20°C to +45°C	-20°C to +60°C
Input Voltage	12V - 25V DC	12V - 25V DC	12V - 25V DC	15V - 60V DC	15V - 60V DC	15V - 60V DC
Dimensions(LxWxH)	77.2 x 120.65 x 162.07mm	109.8 x 136.18 x 164.46mm	139.8 x 159.27 x 188.47mm	128 x 122 x 198mm	128 x 122 x 198mm	125 x 120 x 157mm
Weight	457g	860g	860g	780g	780g	640g

Laser IR Illuminator								
	VS-LD1005	VS-LD1008	IR-808-1500-S	IR-940-1500-S	IR-808-2000-S	IR-940-2000-S	IR-808-3000-M	IR-808-5000-M
Effective Range Illuminator	≥500m	≥800m	≥1500m	≥1500m	≥2000m	≥2000m	≥3000m	≥5000m
Wavelength	850nm	850nm	808nm	940nm	808nm	940nm	808nm	808nm
Max. Output Power	2W	4W	8W	9.5W	12W	12W	20W	50W
Illuminator Angle	2° - 52°	2° - 60°	0.8° - 70°	0.8° - 70°	0.8° - 70°	0.8° - 70°	0.3° - 35°	0.3° - 30°
Power	12VDC, Max 15W	12VDC, Max 20W	12VDC, Max 28W	24VDC, Max 28W	24VDC, Max 40W	24VDC, Max 40W	24VDC, Max 75W	24VDC, Max 130W
Serial Communication	RS485/TTL	RS485/TTL	RS485/TTL	RS485/TTL	RS485/TTL	RS485/TTL	RS485/TTL	RS485/TTL
Laser Class	3B	3B	4B	4B	4B	4B	4B	4B
Dimensions(LxWxH)	60 x 30 x 40mm	90 x 40 x 55mm	147 x 64 x 63mm	147 x 64 x 63mm	147 x 64 x 63mm	147 x 64 x 63mm	310 x 98 x 78mm	372 x 153 x 132mm
Weight	77g	210g	550g	550g	550g	550g	1.7kg	2.3kg
Special Features	/	/	/	/	/	/	Motorized alignment adjustment: ±3°, Accuracy: 0.01° - 0.02°	Motorized alignment adjustment: ±3°, Accuracy: 0.01° - 0.02°

Laser Range Finder				
	LR3000	LR4000	LR6000	LR12000
Max Range	Building≥4000m Vehicle≥3000m Human≥2000m UAV≥1000m	Building≥5600m Vehicle≥4800m Human≥3200m UAV≥1700m	Building≥7100m Vehicle≥6000m Human≥3800m UAV≥2000m	Building≥16000m Vehicle≥12000m Human≥5900m UAV≥3200m
Mini Range	20m	50m	20m	50m
Accuracy	±1m	±1m	±1m	±2m
Frequency	1 - 10Hz	1 - 10Hz	1 - 10Hz	1 - 10Hz
Range Resolution	≤20m	≤30m	≤30m	≤30m
Eye safety	Class1/1M	Class1/1M	Class1/1M	Class1/1M
Wavelength	1535nm	1535nm	1535nm	1535nm
Power	4.5 - 16VDC, Standby 1mW, Typical ≤2.5W, Max≤ 7W@12V	4.5 - 16VDC, Standby 1mW, Typical ≤4W, Max ≤ 14W@12V	4.5 - 16VDC, Standby 1mW, Typical ≤3.5W, Max≤ 7W@12V	4.5 - 16VDC, Standby 1mW, Typical ≤3.5W, Max≤ 7W@12V
Dimensions(LxWxH)	48 x 30.5 x 21mm	65 x 48 x 32mm	65 x 48 x 32mm	83 x 46.5 x 59mm
Weight	32g	75g	58g	127g


Camera Expansion Board				
SDI & CVBS Board	RS485 & Alarn Board	24V Power Board	PoE Power Board	LVDS/MIPI Cable

VISHEEN

Hangzhou View Sheen Technology Co., Ltd.

 20th Floor, Block 9, Chunfeng Innovation Park, Binjiang District, Hangzhou, China

 sales@viewsheen.com

 +86-571-86939356

 viewsheen.com

